

SmartPTT

Integrated Solution for MOTOTRBO™

- ✓ Networks of any size and topology
- ✓ System infrastructure monitoring and control
- ✓ Bridging for different radio networks



SmartPTT for Airports

Worker Safety

SmartPTT's Man-Down and Lone Worker functions can indicate to a dispatcher that an employee might be in distress based on the radio's movement or angle or a lack of radio activity by the employee. SmartPTT's indoor and outdoor location tracking capabilities enable dispatchers to quickly locate employees in need of assistance. The geo-fence features enable dispatchers to control hazardous or off-limits areas in airports such as runways.

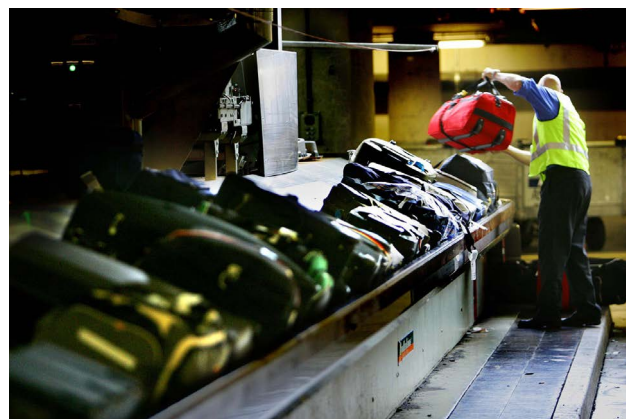


Emergency Communications

For faster responses during emergencies, dispatchers can cross-patch first responders with other departments needing assistance. Voice recording enables managers to analyze an incident after the fact to determine cause and future preventative efforts.

Coordination of Tasks

SmartPTT dispatchers can track the location of baggage handlers, fuel trucks and snow plows and reroute via voice, text or job ticket. This enables a more efficient use of resources as demand shifts throughout the day between terminals. Maintenance, Janitorial and Fire & Rescue staff can be dispatched by voice, text or job ticket to respond to issues as they arise.



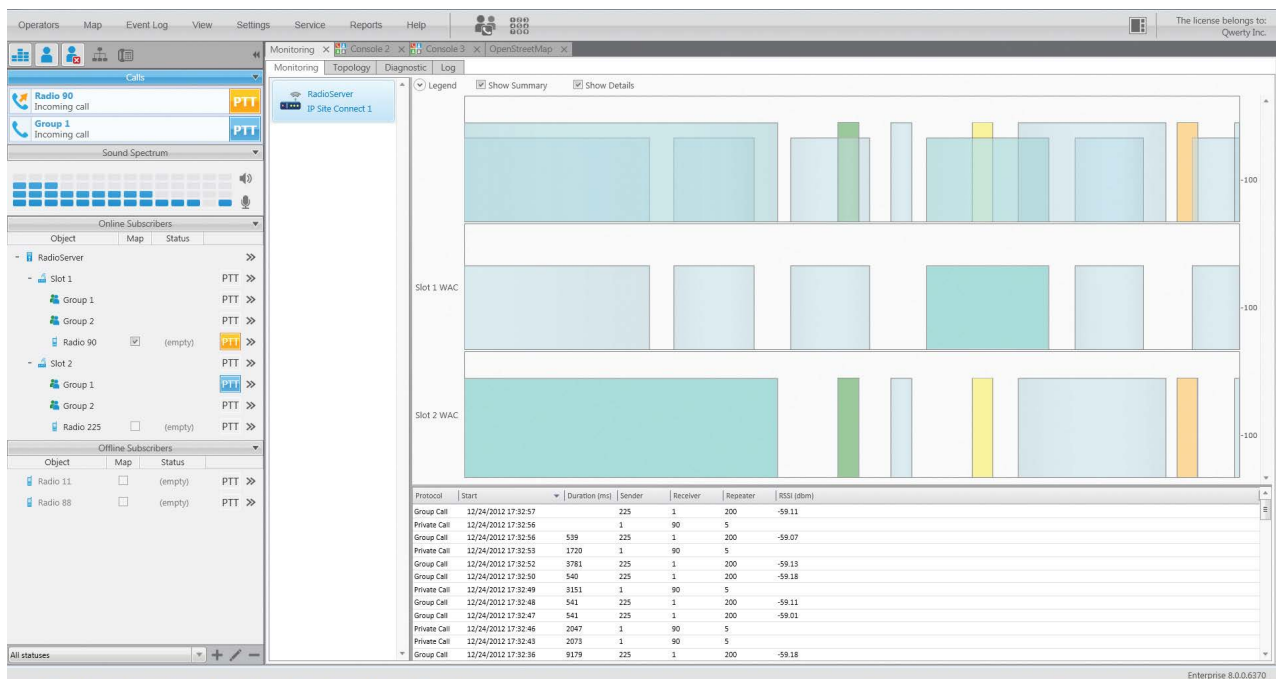
Seamless Communications

SmartPTT can integrate your MOTOTRBO radio system with a telephone system, email and text messaging services, and an application for mobile devices. Workers or supervisors off-duty or out of the RF coverage area can call into the radio system using the SmartPTT Mobile Application for smartphones and tablets or using the Telephone Interconnect Option. Using the Radio Network Bridging Option, SmartPTT can interoperate your MOTOTRBO radio system to other radio networks such as P25 or analog.



Radio Network Reliability

The radio network can be monitored and controlled from a central point. System load can be monitored to ensure equal load sharing between sites and if needed change configuration. With special rules and alerts, in automatic mode, SmartPTT will send a message about failures or degraded conditions via email or a text message to a cell phone. Reports are available for statistics and further modernization of the system.



www.elcomplus.com
www.smartptt.com