



# SmartPTT

Integrated Dispatch Solution for MOTOTRBO™

# SMARTPTT IS AN INTEGRATED VOICE AND DATA DISPATCH SOFTWARE APPLICATION FOR MOTOROLA MOTOTRBO RADIO SYSTEMS

## VERTICALS



### MINING

Prevent accidents by transmitting blast alarms and weather notifications

Reduce queues and inactive mining shovels to maximize productivity



### OIL & GAS

Quickly identify a subscriber in distress and their location

Dispatching the closest resource reduces wasted man-hours, fuel, and vehicle wear and tear



### TRANSPORTATION

Control hazardous or off-limits areas in airports such as runways

Track the location of baggage trucks, fuel trucks, and snow plows



### MUNICIPALITY

Manage tasks to ensure services are restored quickly

Interoperability between city departments



### SERVICE & HOSPITALITY

Improve guests experience by ensuring quick and accurate responses to their requests

Emergency management and location positioning enable fast reaction to staff accidents



### EDUCATION

Interoperability with public safety during incidents

Track the routes of school buses and control the deviations from them



### PUBLIC SAFETY

Interoperability between different agencies during emergencies

Enhanced coordination capabilities and reduced response time



### SPORT

Control fans' activities and provide for the safety of the teams and guests

Know the location of staff for faster responses during emergencies or incidents



### ENERGY

Reduce outage times

Manage the assignment and status of work orders



### MANUFACTURING

Improve coordination of tasks across production teams

Monitor staff activities in hazardous work areas



## THE ISSUES FACED BY ANY ORGANIZATION THAT VALUES THEIR TIME, MONEY AND RESOURCES

? **HOW TO ENSURE WORKER  
SAFETY?**

? **HOW TO REDUCE  
COSTS?**

? **HOW TO MAXIMIZE  
WORKER EFFICIENCY?**

? **HOW TO MANAGE  
PROACTIVELY?**



## HOW WILL SMARTPTT BENEFIT MY ORGANIZATION?



### **COST SAVING**

Control work force size by efficiently distributing work tasks

Decrease fuel consumption and wear and tear on vehicles

Avoid costly litigation using voice and event logs to prove processes were correctly followed



### **WORKER EFFICIENCY**

Monitor the progress of assigned tasks through to completion to ensure tasks are done timely and accurately

Employee accountability using reports and event logs

Be sure of the employees' location at their workplaces



### **WORKER SAFETY**

Knowing the location (indoors or outdoors) of a radio user provides faster response times during an emergency

Emergency alerts notify the dispatcher of a radio user in distress

Notify radio users when they are working in a hazardous work area



### **PROACTIVE MANAGEMENT**

Incident analysis and prevention to improve future processes

Information safety with data recording both on server and dispatcher sides

Minimum system downtime by remote analysis and control of the radio network

# CORE FEATURES



## VOICE DISPATCH

Instant communications and efficient team coordination – the system is under dispatcher’s permanent control

## TEXT AND DATA TRANSFER

Text messages, e-mails and SMS exchange between the dispatcher console, radios, talkgroups, and smartphones



## GPS TRACKING\*

Know the exact workers location at any moment and enhance their safety by control of their entering hazardous zones



## VOICE\* AND EVENT LOG

Data storage and easy reconstruction of incident’s details

## JOB TICKETING

Create, assign, and control work orders to ensure timely and accurate completion of tasks

## TELEMETRY

Use the GPIO pins on mobile radios to be notified of events (i.e. door open/ closed) or control a device (i.e. device on/off)



## FLEET MANAGEMENT

Easily manage the details of individual and groups of subscribers, as well as create customizable rules and alerts



## INDOOR TRACKING

Monitor the position of employees inside buildings and other locations where GPS tracking is not available



## SCADA

Monitor and control remote equipment to avoid costly spills and repairs to equipment

## MONITORING

Real-time network infrastructure monitoring with graphical representation of network topology and coverage map analysis



## RADIO NETWORK BRIDGING

Connect subscribers on different radio systems for interoperability or system migration

## TELEPHONE INTERCONNECT

Seamless communications between radios, dispatcher and telephone subscribers



## DIRECT IP-CONNECTION TO MOTOTRBO REPEATERS

Connect to the MOTOTRBO radio system directly via IP without the need for control stations

## MAN DOWN

The radio can send an emergency to the SmartPTT dispatcher in the case of no movement or a wrong angle for too long



## WEB CLIENT

View subscriber location information from anywhere using a PC’s web browser

\* Features are standard in SmartPTT Enterprise and could be optional in SmartPTT PLUS depending on the region



# SMARTPTT CUSTOM CONSOLE

Intelligent, customizable and user-friendly

## HOW DISPATCHERS BENEFIT USING SMARTPTT



- Quick private call and group call initiation
- Telemetry control for turning devices on/off or opening/closing a door
- Voice notifications: initiate pre-recorded messages or tones by pressing the button
- Keypad to manually dial a subscriber by radio ID or select from an alphabetical list
- Create a control panel with quick access to the most frequently used features
- Incoming events panel registers all incoming private calls and text messages to the dispatcher
- Set the background that you will enjoy

**EASY MIGRATION FROM OLD DISPATCH CONSOLES**

**SIMPLE AND FLEXIBLE USER INTERFACE, CUSTOMIZED TO EVERY DISPATCHER NEEDS**

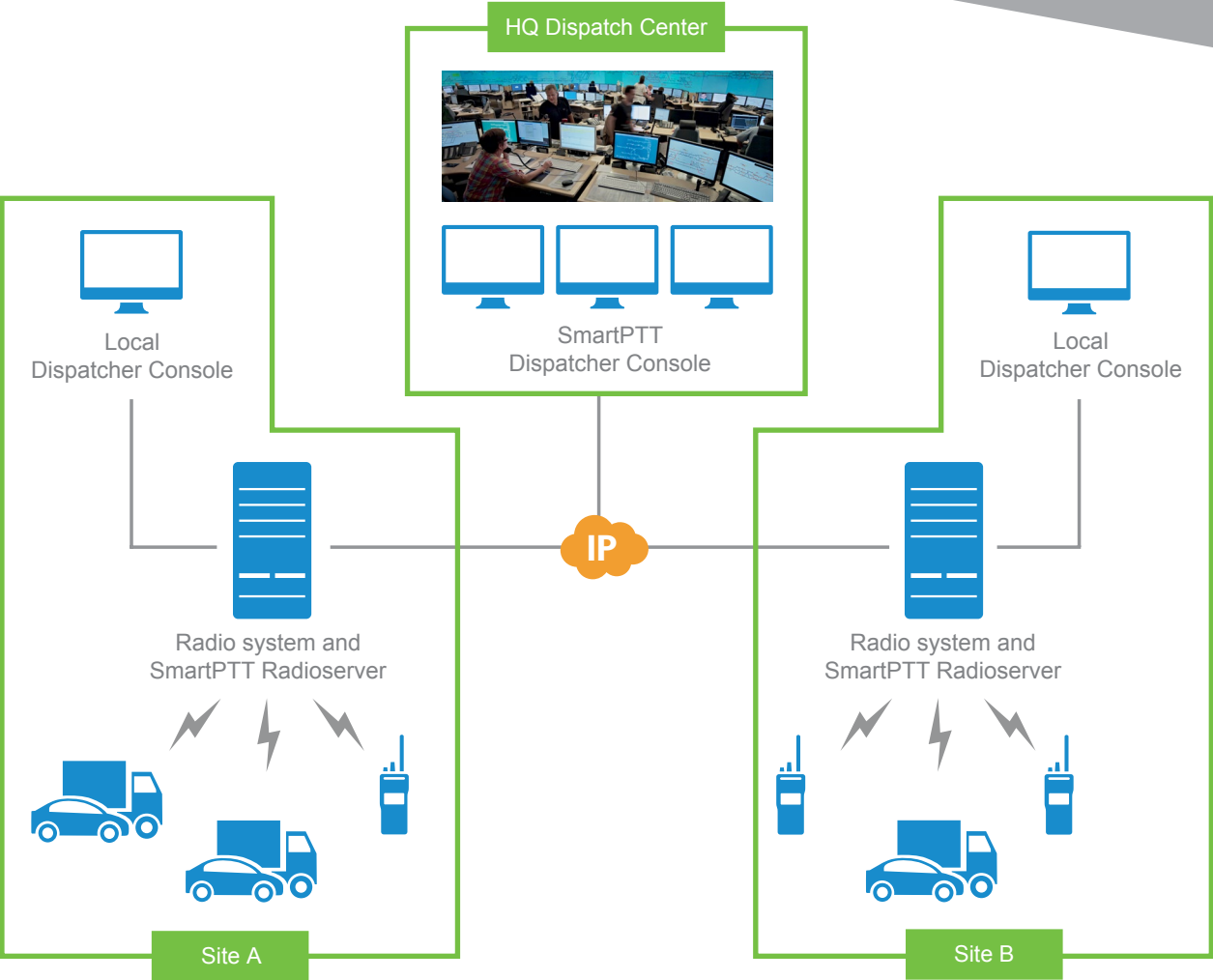
**FASTER DISPATCHER OPERATION AND REACTION TIME DURING EMERGENCIES**





# MULTI-LEVEL DISPATCH

Dispatch positions can be installed locally, regionally, nationally, or worldwide, which is important and convenient for geographically distributed radio systems



# INTEROPERABLE COMMUNICATIONS

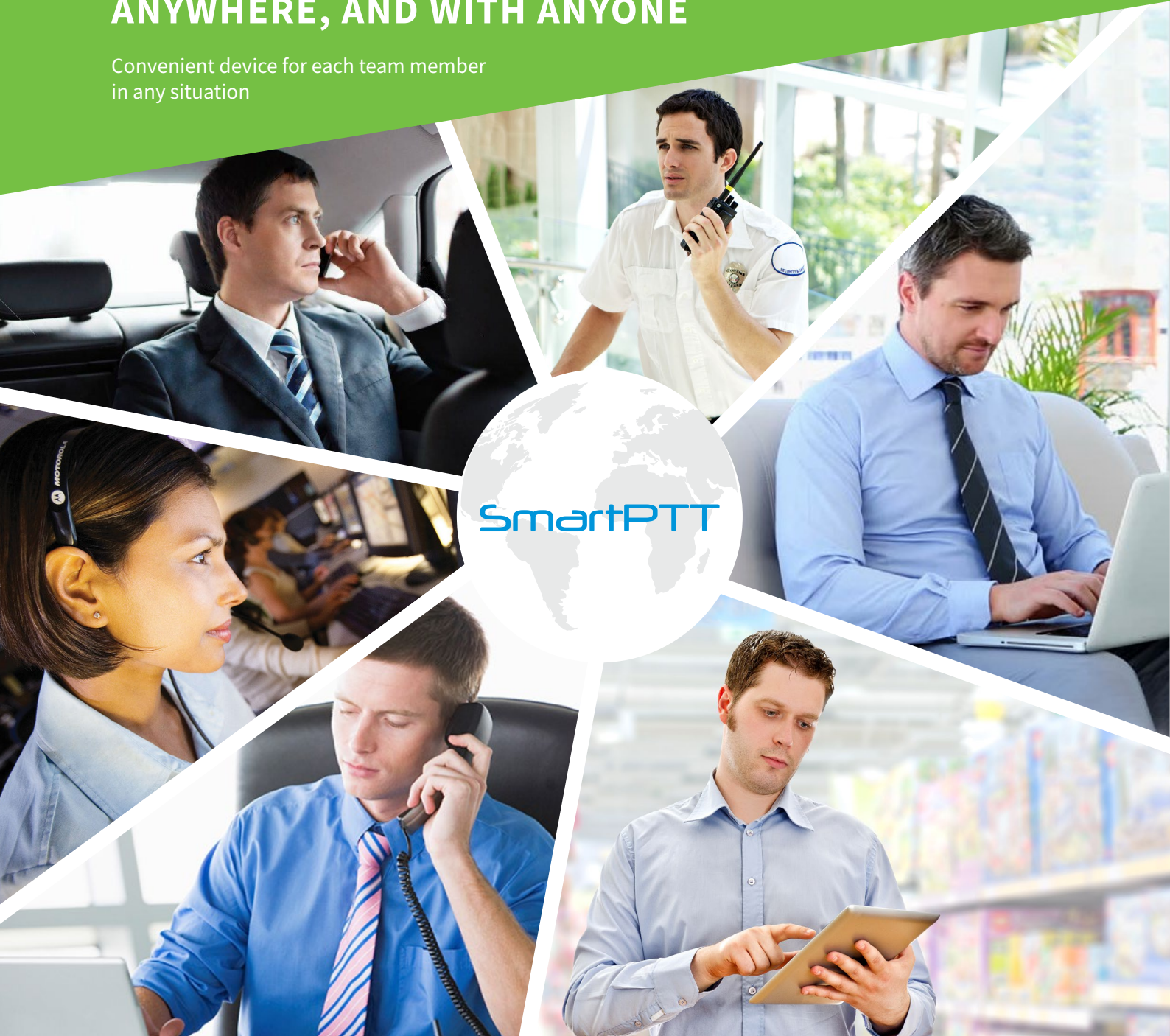
Bridging different types of networks ensures smooth migration from analog to digital and communication interoperability between schools, police, fire department, hospital and other agencies

A collage of images representing various emergency services and communication equipment. The images include a yellow school bus, a police officer, a firefighter, a paramedic, a hospital, and a construction worker. The collage is overlaid with several product labels: **Capacity Max**, **Analog**, **Conventional Digital**, **IP Site Connect**, **Capacity Plus**, **Linked Capacity Plus**, **Connect Plus**, and **SMARTPTT RADIOSERVER**. The labels are arranged in a circular pattern around the central images.

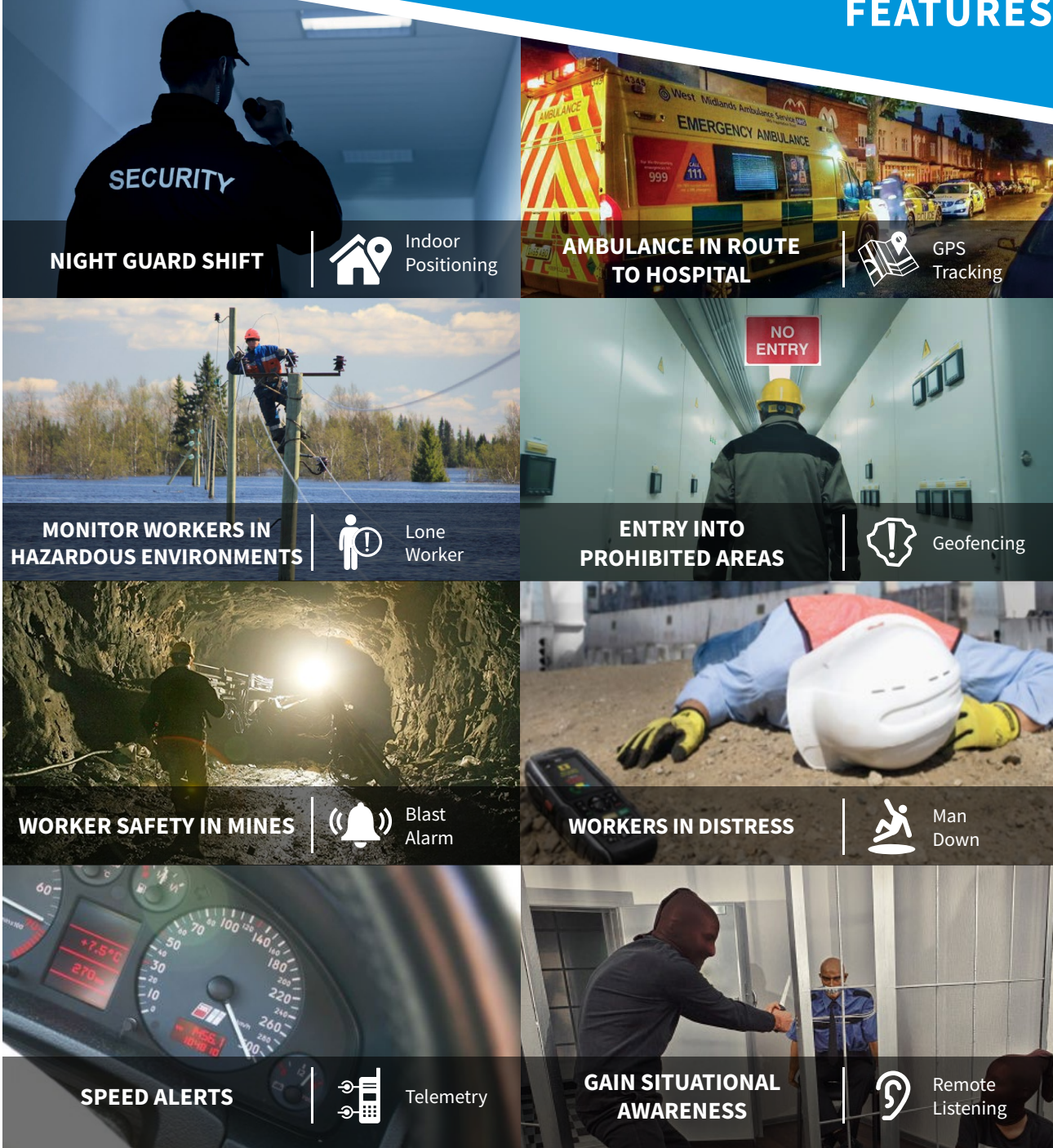


# SEAMLESS COMMUNICATIONS ANYTIME, ANYWHERE, AND WITH ANYONE

Convenient device for each team member  
in any situation



# PERSONNEL SAFETY FEATURES



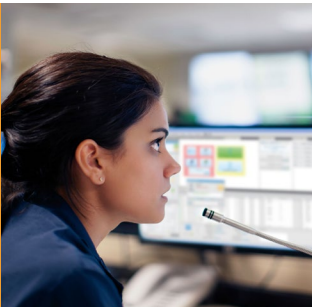


# PRODUCTS

## SOFTWARE

### SmartPTT Enterprise

SmartPTT version sold directly by Elcomplus for simplex systems using control stations or conventional and IP Site Connect systems using IP wireline connection to the repeaters



### SmartPTT PLUS

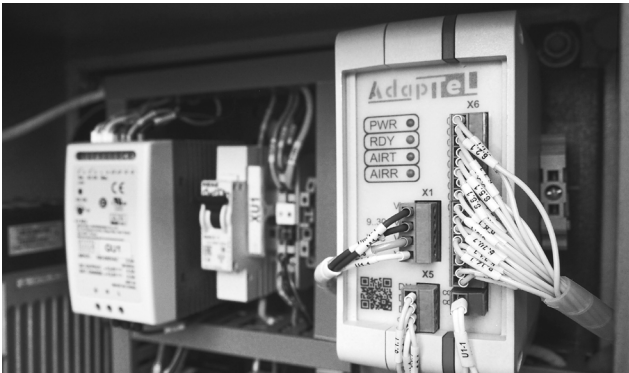
Motorola Sold & Supported version of SmartPTT offering full voice and data by wireless connection to all MOTOTRBO topologies

## HARDWARE



### RG-1000e

RoIP gateway to connect remote donor radios to the SmartPTT radioserver



### AdapTel

interface adapter for receiving and transmitting telemetry data in DMR networks

# TECHNICAL SERVICES



FASTER IMPLEMENTATION TIMES

SMARTPTT IS CUSTOMIZED TO THE CUSTOMER'S NEEDS

DISPATCHER TRAINING HELPS ENSURE CORRECT SYSTEM USAGE AND COMFORT WITH THE SYSTEM

GREATLY REDUCE IMPLEMENTATION ISSUES FOR GREATER CUSTOMER SATISFACTION

- ➔ RF COVERAGE ESTIMATION
- ➔ SOFTWARE AND HARDWARE SUPPLY
- ➔ IMPLEMENTATION ONSITE AND REMOTELY
- ➔ TECHNICAL AND DISPATCHER TRAINING
- ➔ SOFTWARE UPDATES AND TECHNICAL SUPPORT





smartptt.com  
info@smartptt.com