



Version 9.0

# Release Notes

May 27, 2016

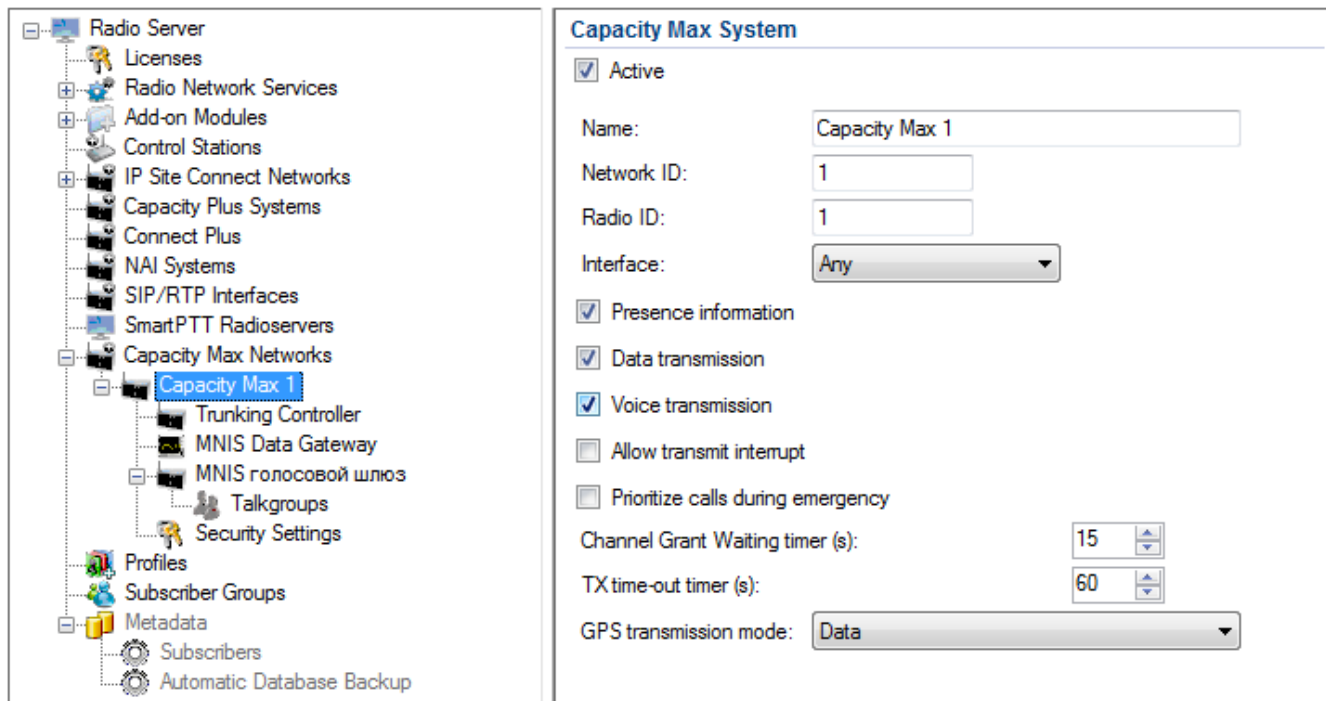


# Table of Contents

New and updated features	2
Interface and behavior changes	13
Deprecated features	18
Known issues	18

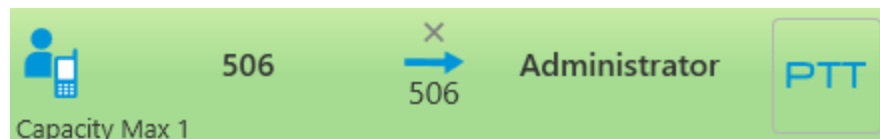
## New and updated features

### Capacity Max system support

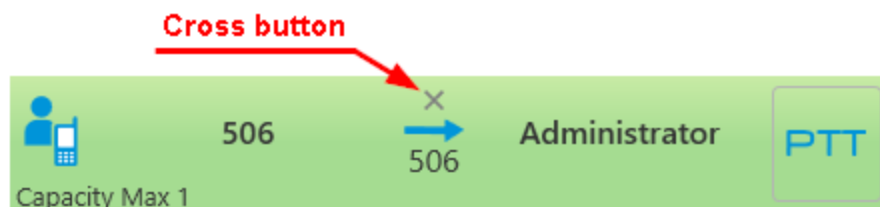


**Capacity Max** benefits are as follows:

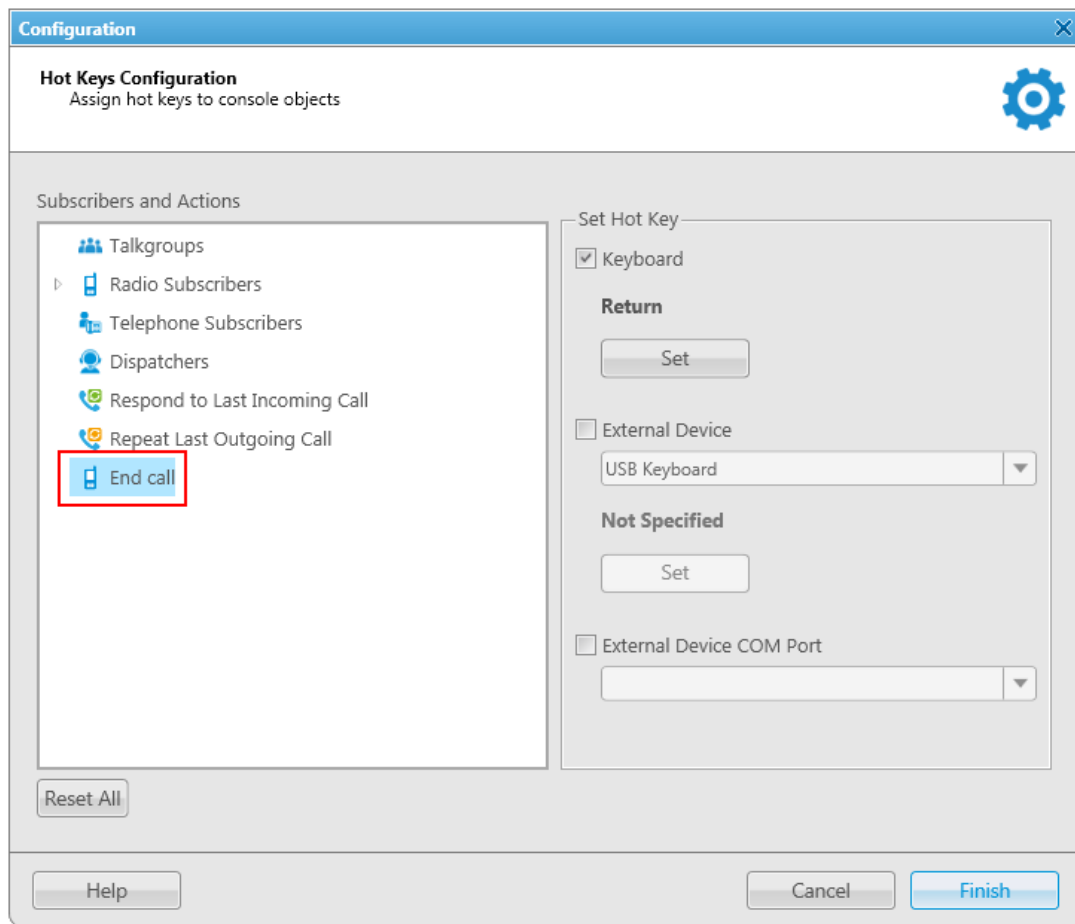
1. Ability to make and receive private FOACSU calls:
  - Initiation of the private FOACSU call by dispatcher.
  - Indication and processing of incoming FOACSU call: answer and decline.
2. Tools for call ending:
  - Right-click the call record,



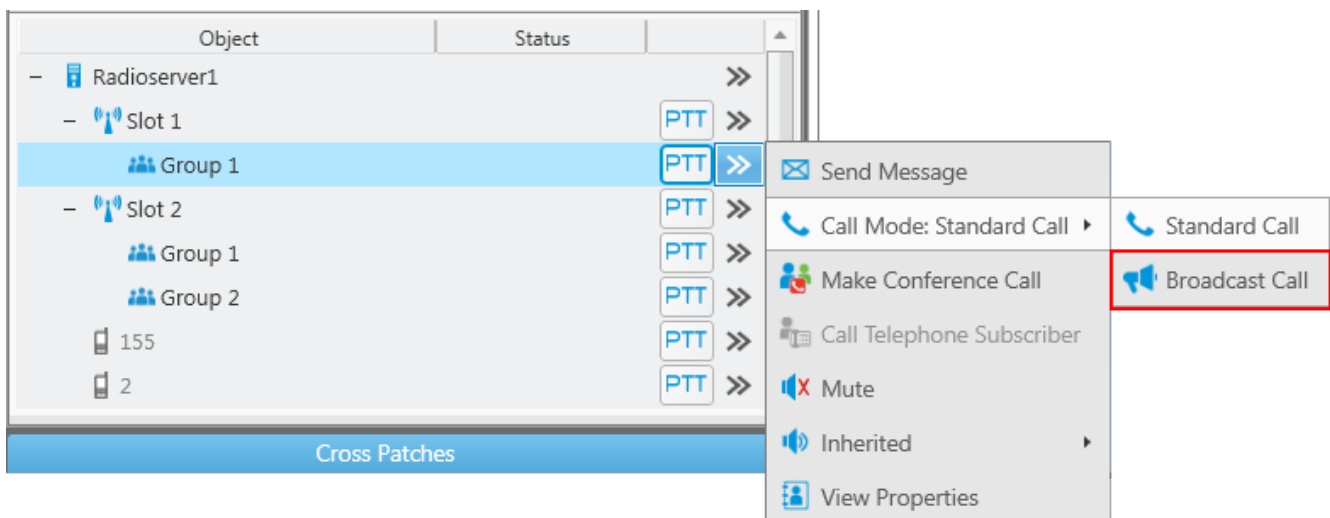
- Click the **Cross** button  on the **Calls** panel,



- Hot key to end the call



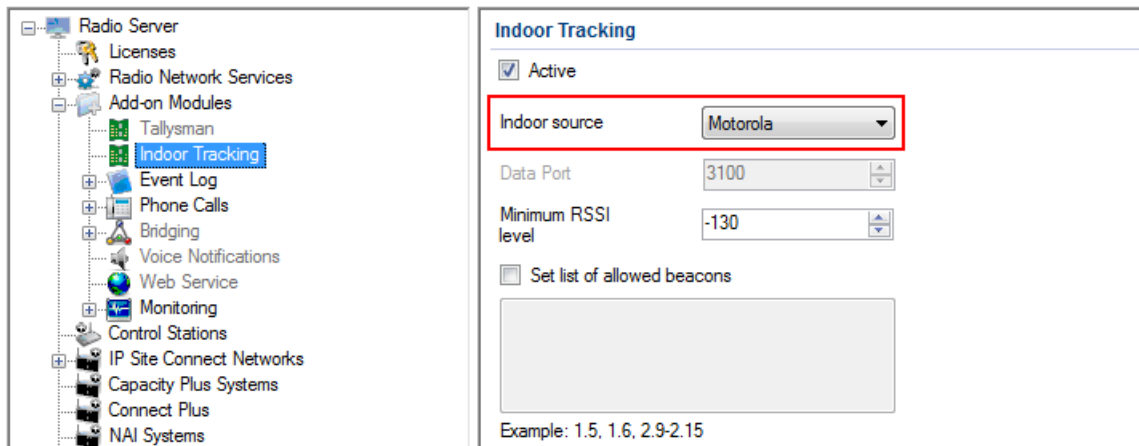
- Support for group **Broadcast Calls** via **Call Mode** switching for a talkgroup.



- The **Capacity Max** system allows you to set the priority of the dispatcher call during the **Emergency Call** activating the **Prioritize calls during emergency** item.

## Support for new MOTOTRBO R2.6 and Connect Plus R2.6 firmware

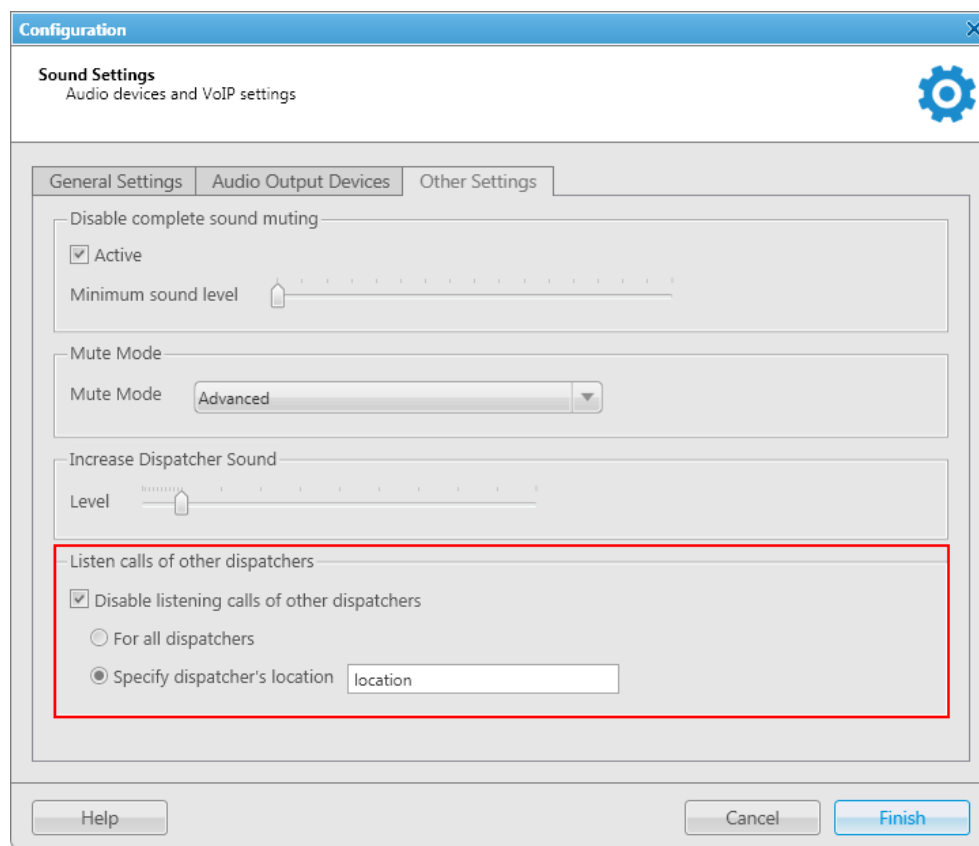
## Support for new Indoor platform – MOTOTRBO iBeacon



1. Ability to set the minimum acceptable RSSI level for these beacons.
2. Indoor data support is added into Lone Worker Rules.

## Audio system enhancement

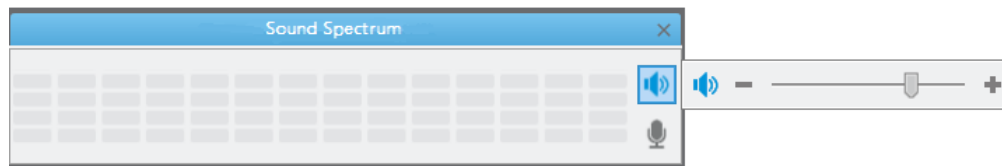
1. Ability to turn off the sound from other dispatchers.



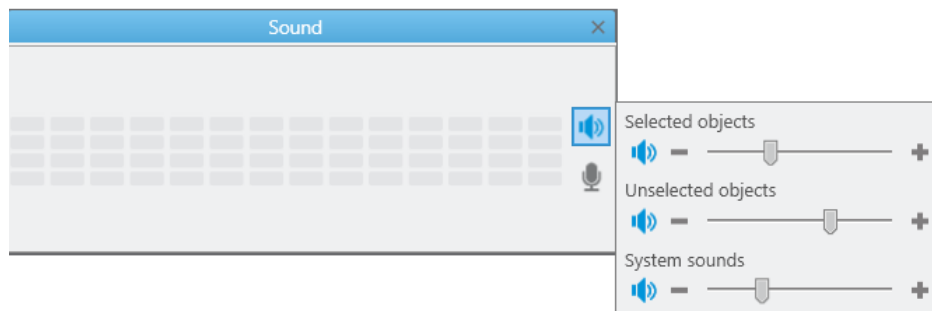
## 2. Ability to configure sound separately for selected and unselected objects:

- Adjust the volume for selected and unselected objects and system sounds on the **Sound panel** (former **Sound Spectrum**).

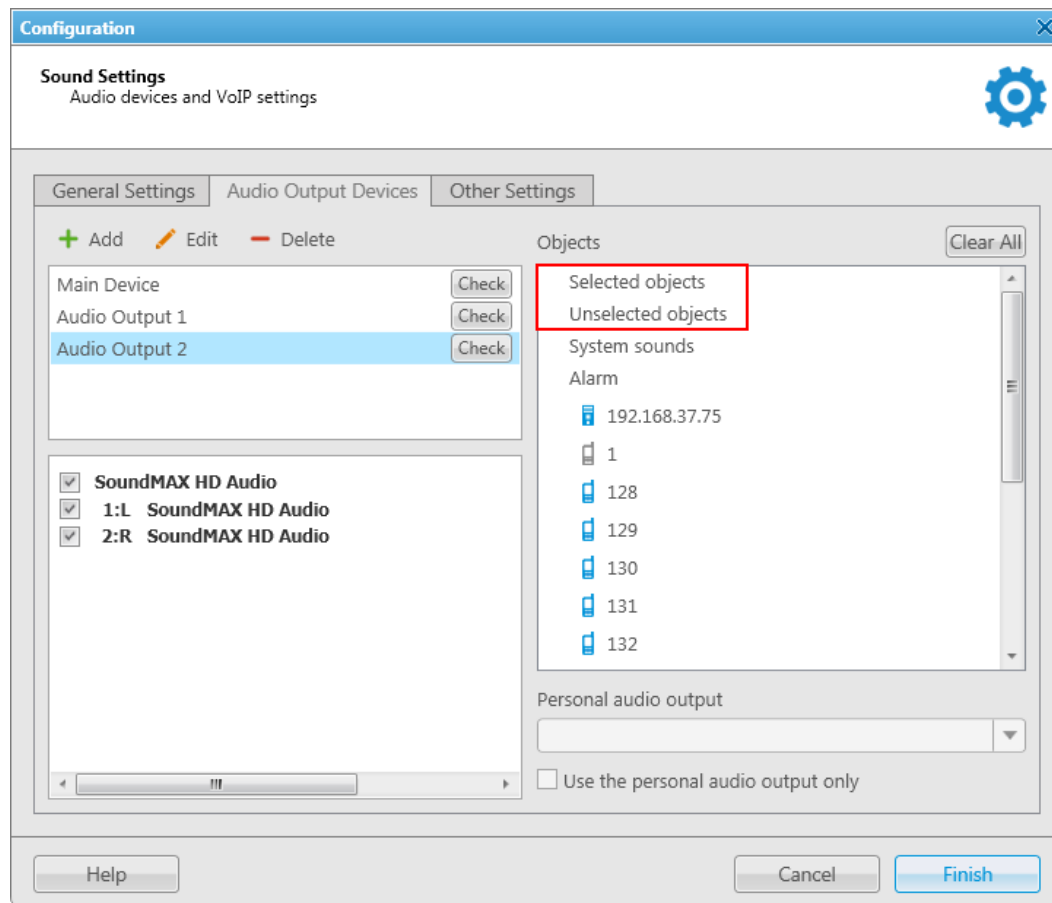
Before:



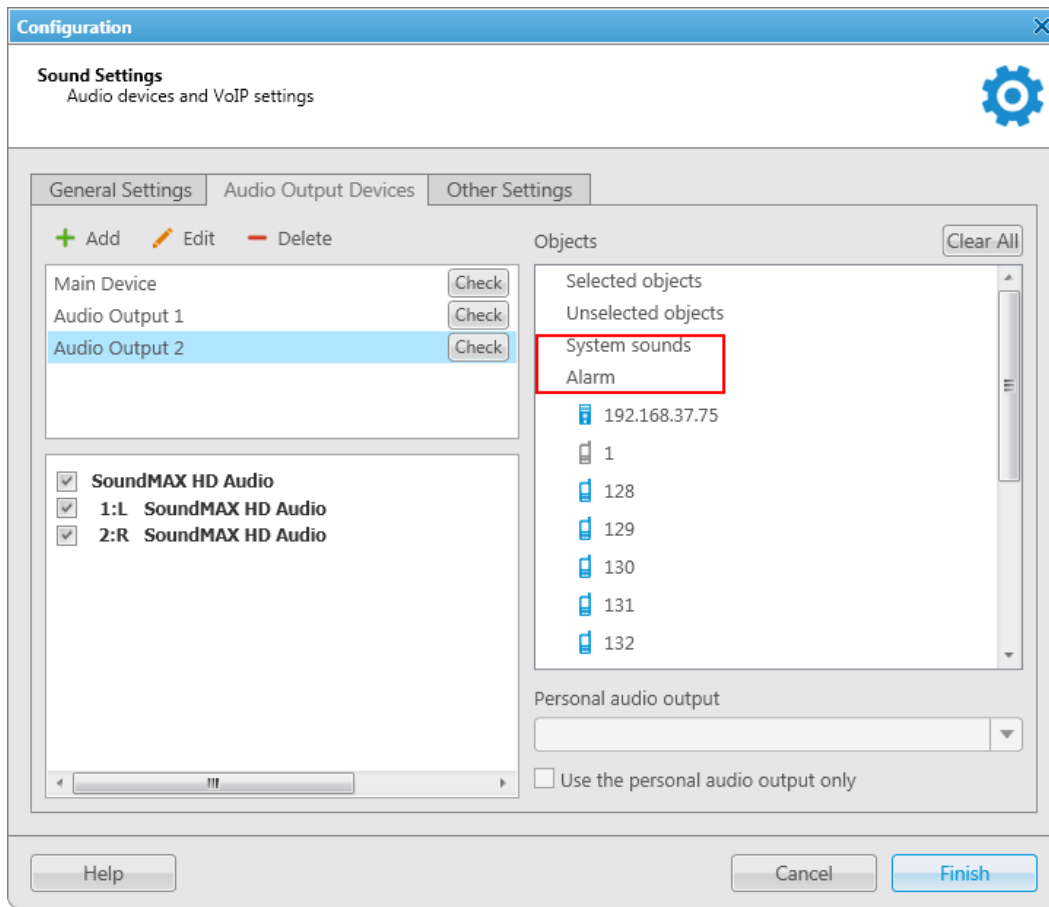
Now:



- Separate audio outputs for **Selected objects** and **Unselected objects**.

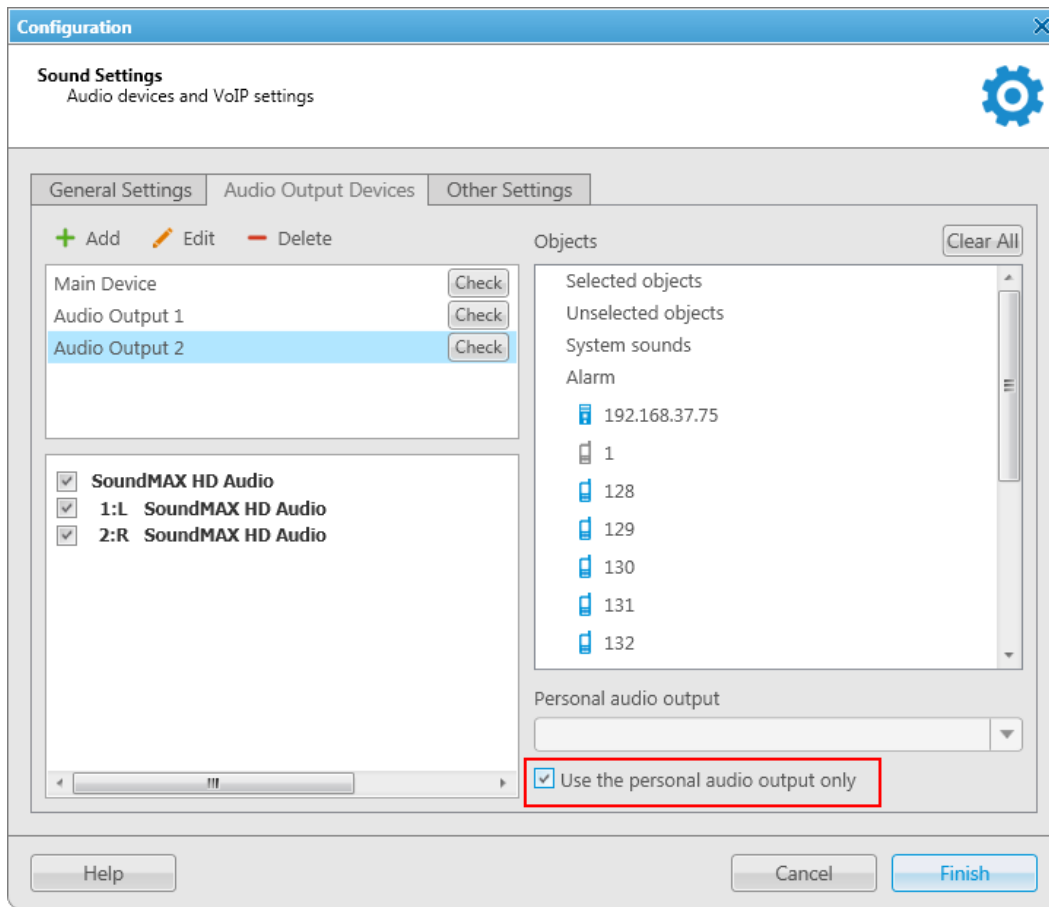


- Separate audio outputs for **System sounds** and **Alarm**.

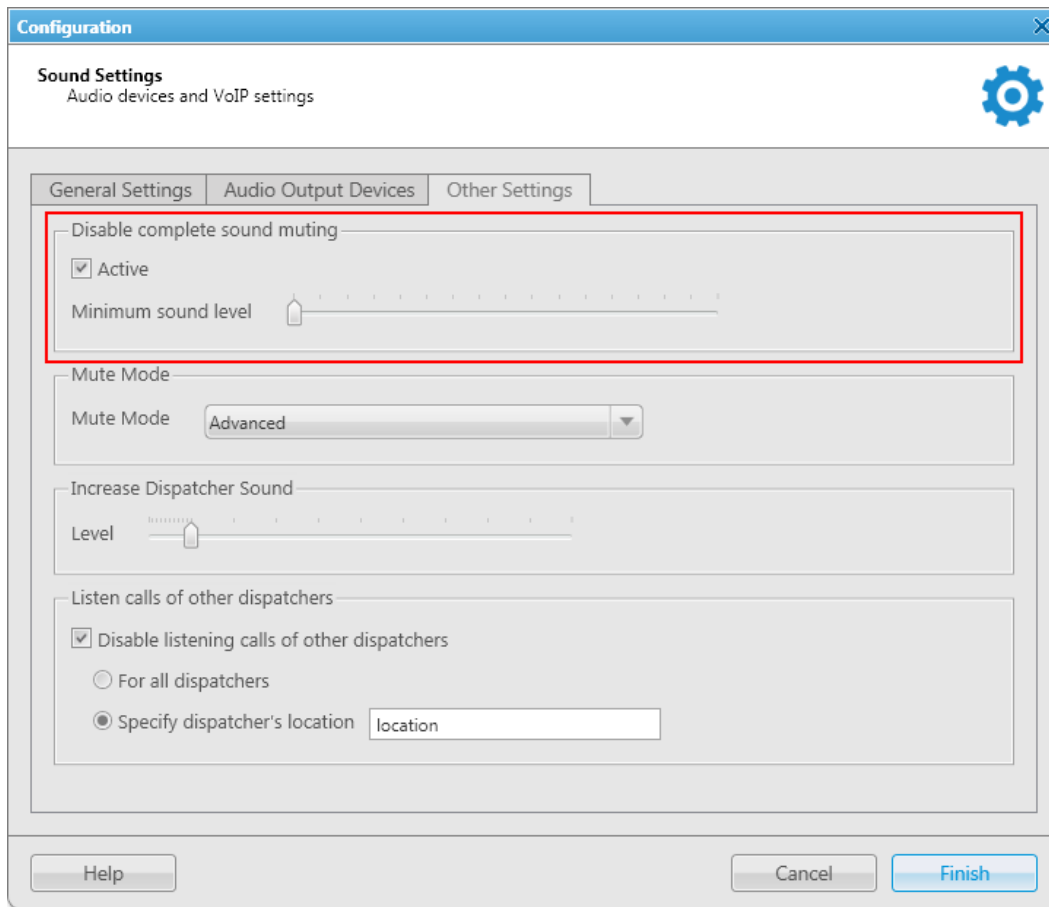




- Ability to use only personal audio output for radio objects.

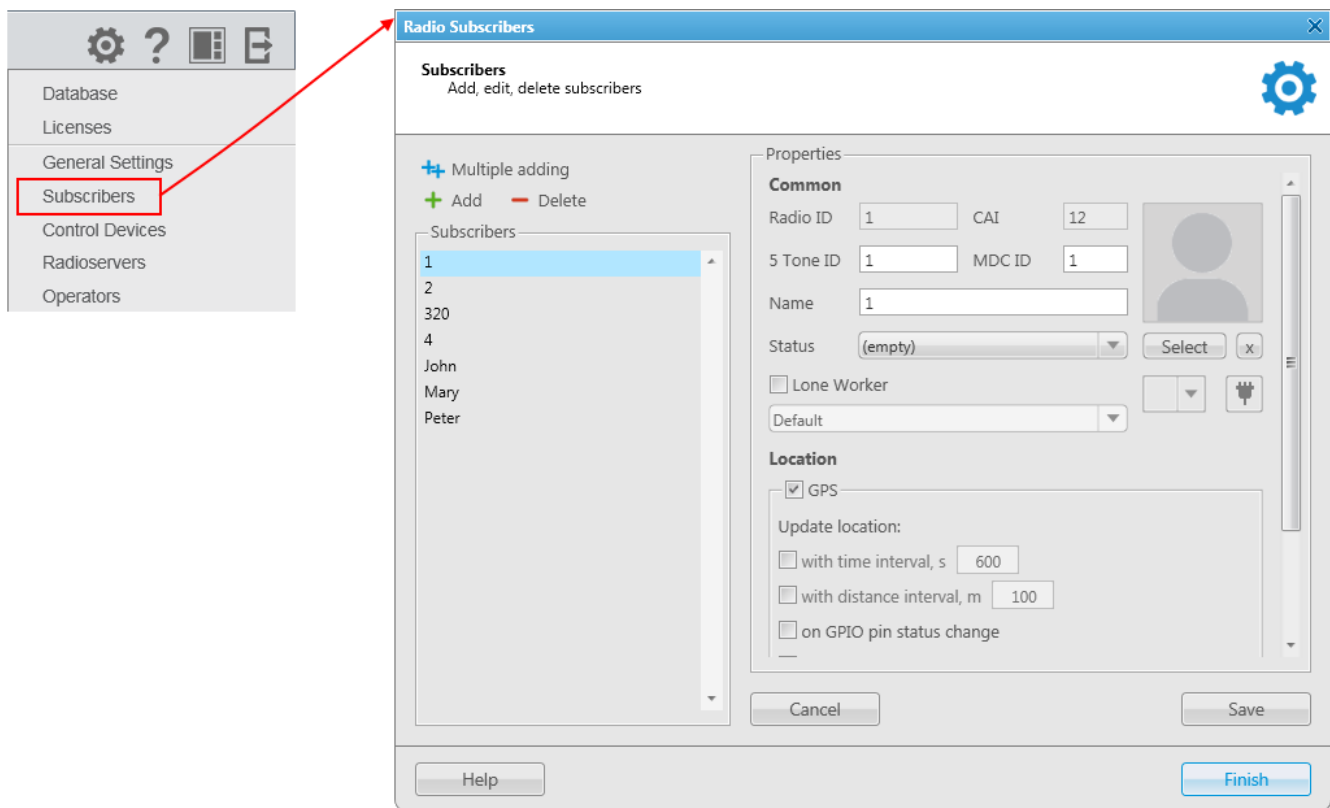


- Disable complete sound muting.



## New subscriber editor

1. The new **Subscribers** panel is added into the **Settings** menu.



- Multiple adding of subscribers with the same properties.

**Radio Subscribers**

**Subscribers**  
Add, edit, delete subscribers

+ Multiple adding  
+ Add - Delete

**Subscribers**

- 1
- 10
- 11
- 2
- 320
- 4
- 9
- John
- Mary
- Peter

**Properties**

**Common**

Radio ID (Example: 1-99, 150)

CAI 12

Status (empty)

☐ Lone Worker

Default

**Location**

☐ GPS

Update location:

☐ with time interval, s 600

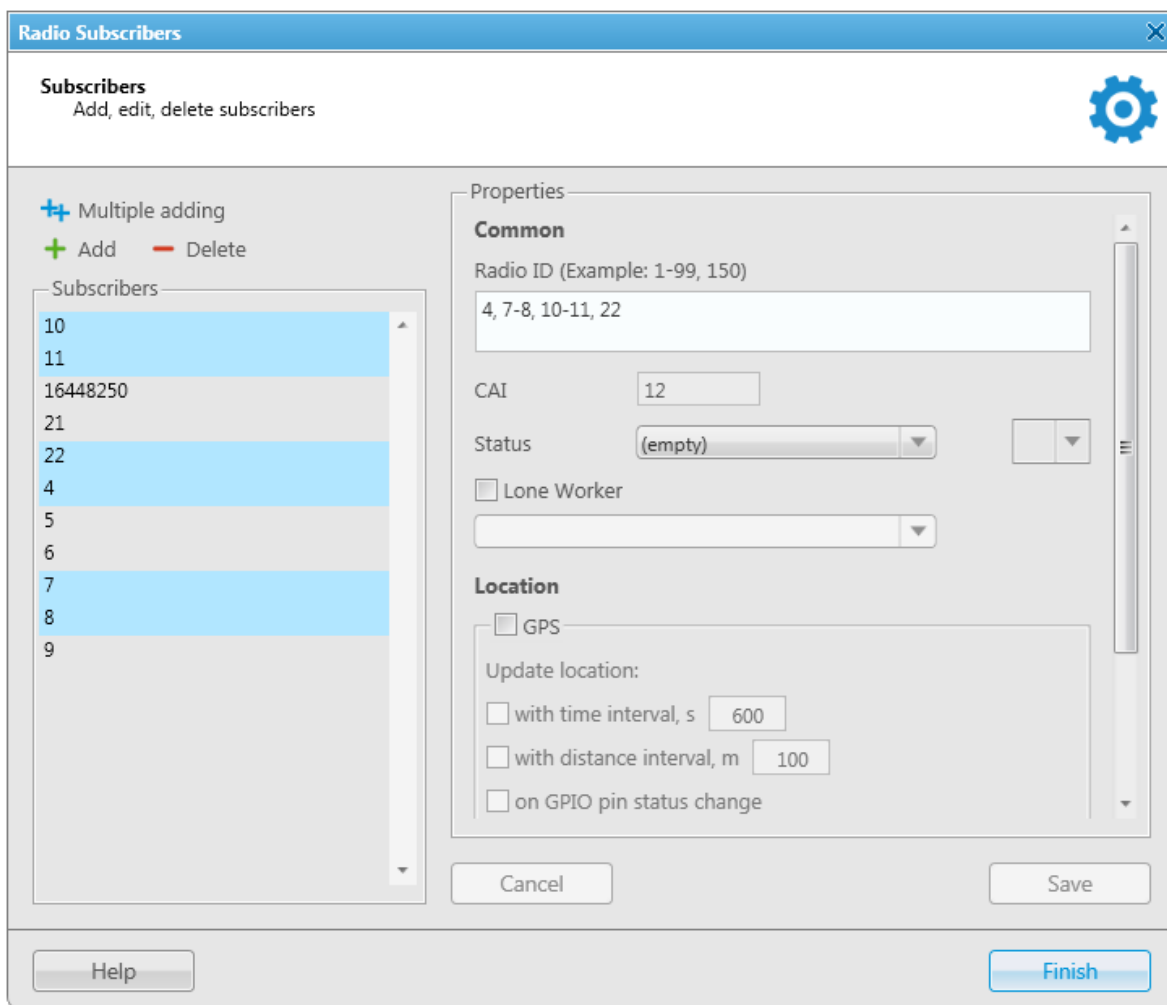
☐ with distance interval, m 100

☐ on GPIO pin status change

Cancel Save

Help Finish

- Multiple editing of subscribers.



Support for new alarm types for Andros (SLR 8000) and Abaco (SLR 5000) repeaters

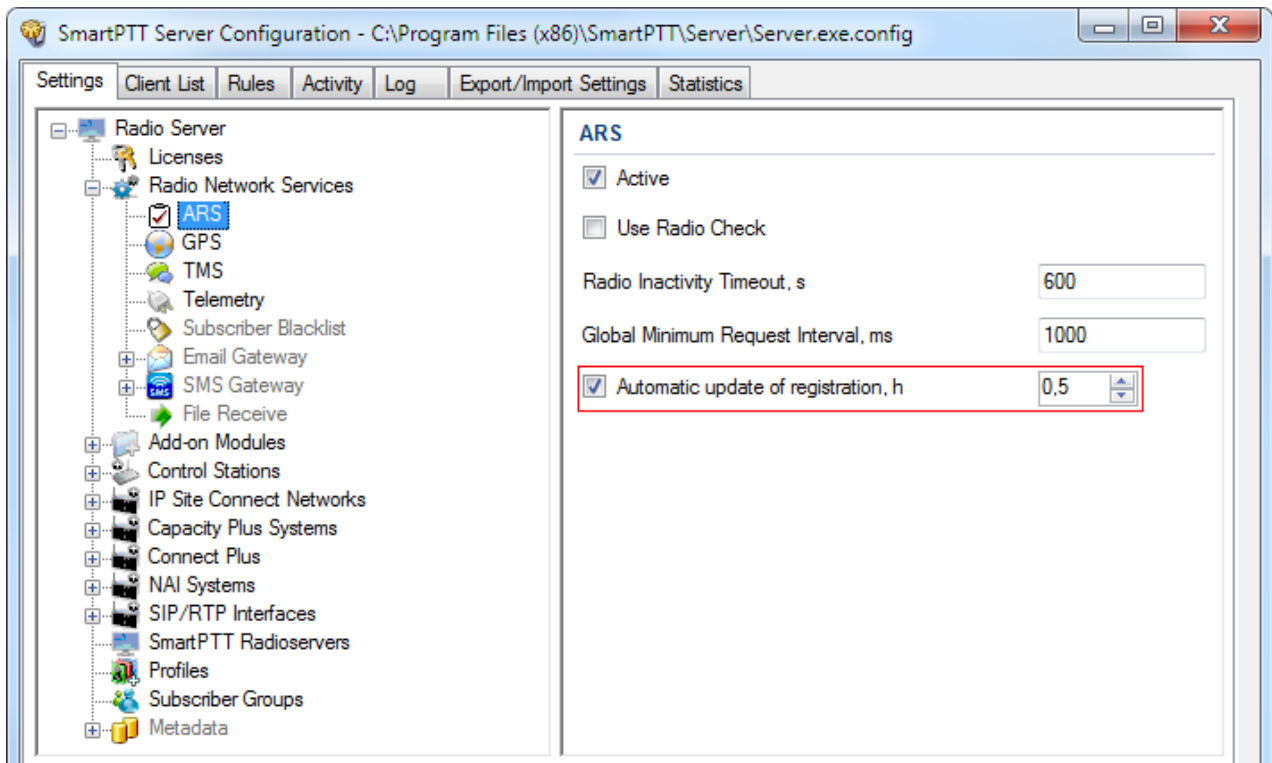
Support for the Serbian and Hungarian languages

Support for the new Microsoft platforms

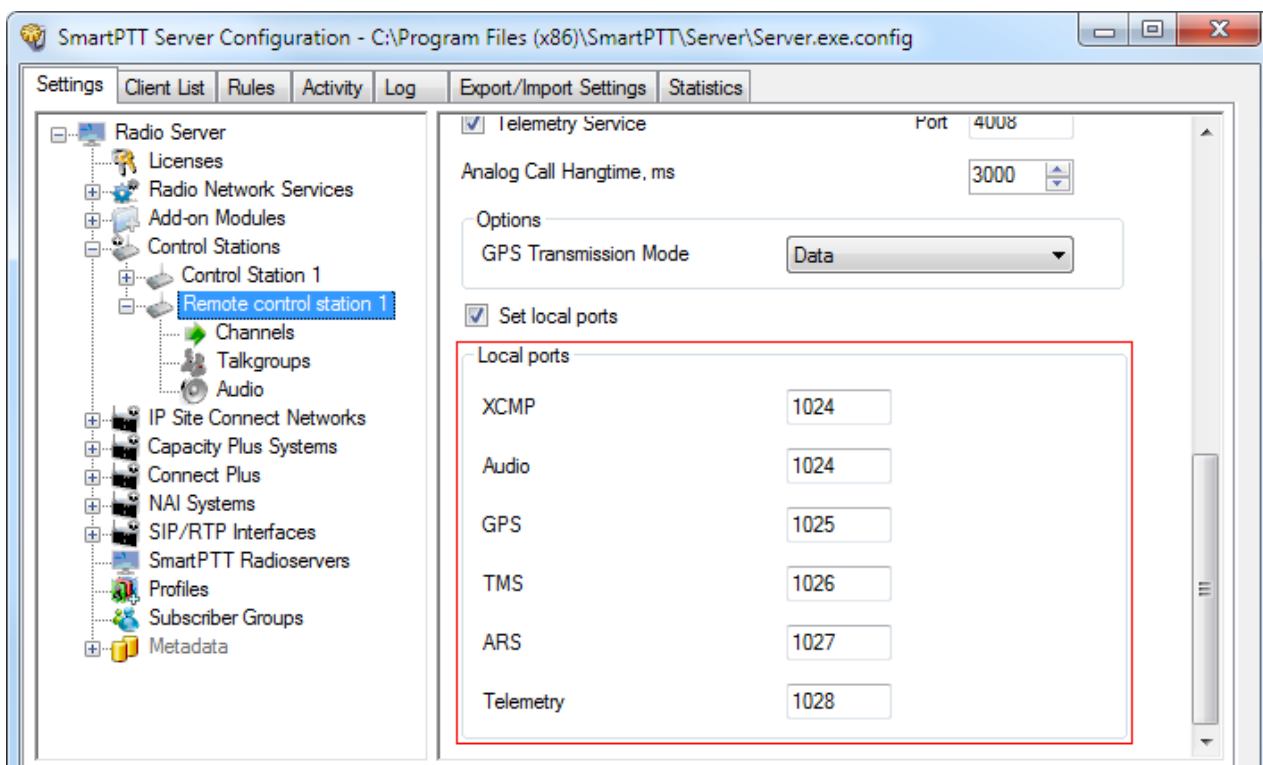
1. Support for Windows 10.
2. Microsoft SQL 2014 Server Express support and its inclusion into SmartPTT distribution kit for all new installations.
3. NET Framework 4.6 support and its inclusion into SmartPTT distribution kit.

## Interface and behavior changes

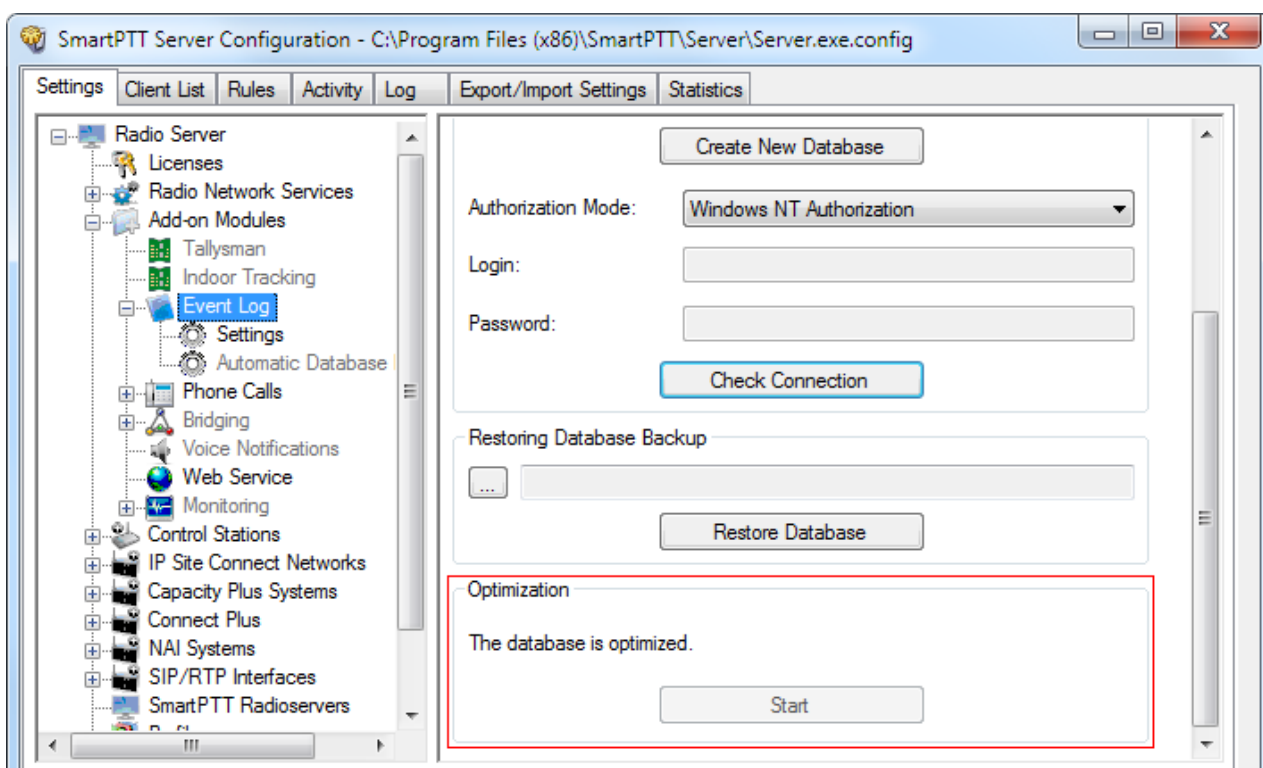
1. Multiple cross patches now working simultaneously.
2. Automatic update of registration period can be changed now.



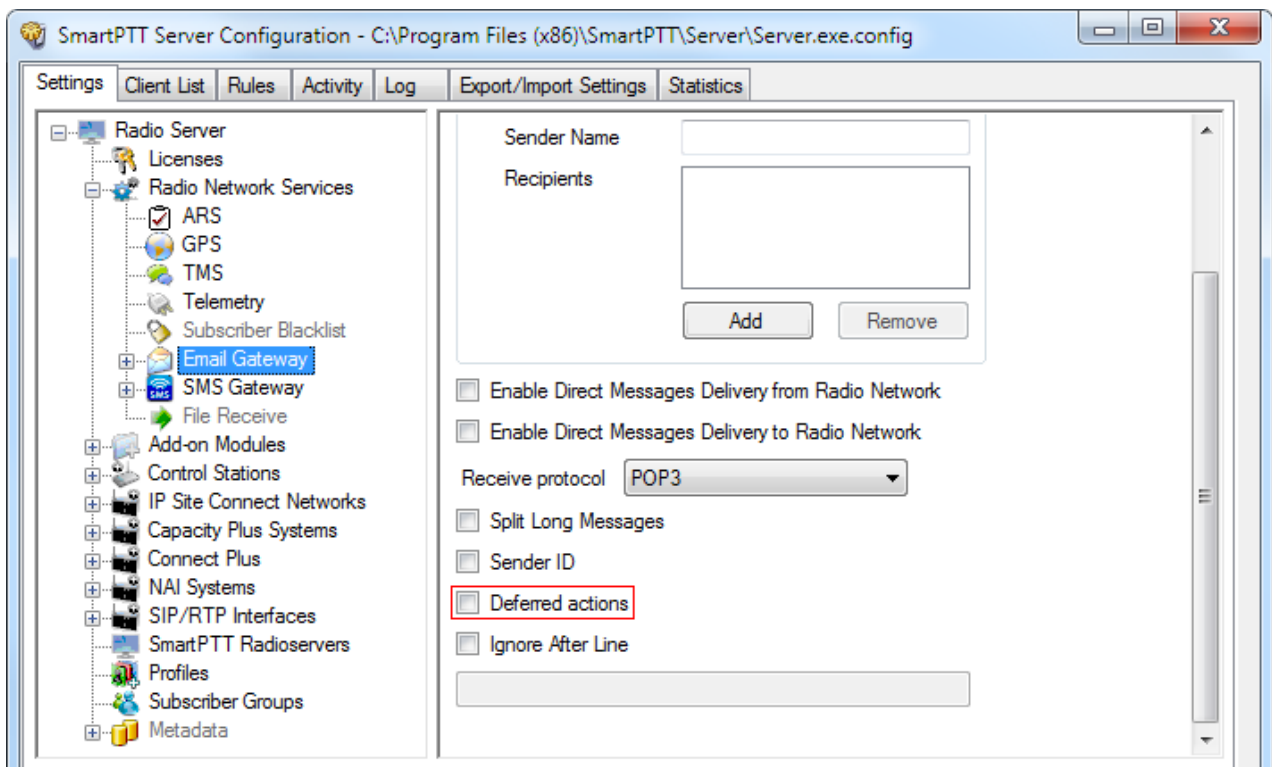
3. Added the ability to set the local ports to connect with RG-1000 manually.



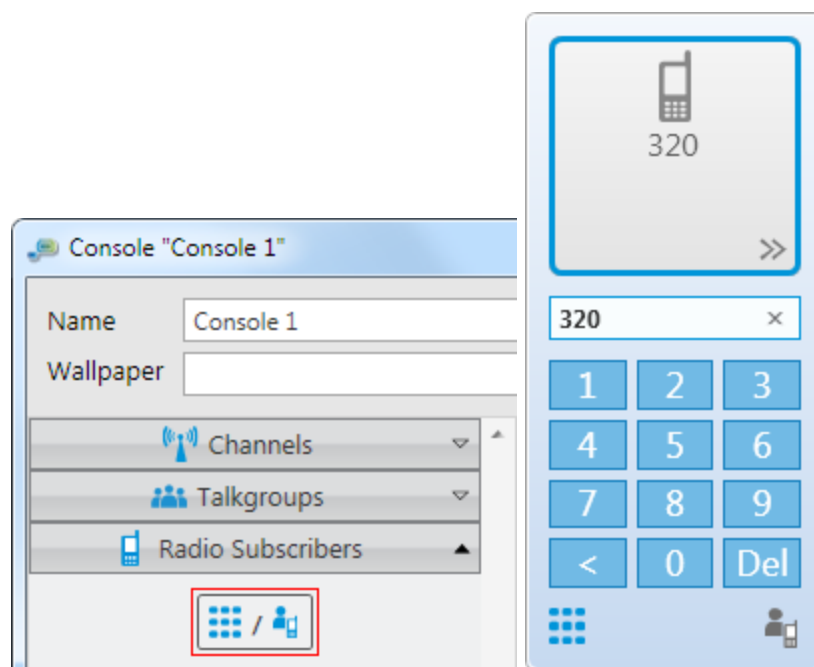
4. Optimization for server database is added.



5. You may configure sending messages from email gateway and SMS gateway as deferred actions.



6. Number of records in the **Event Log** of SmartPTT Radioserver Configuration changed to 1000.
7. New tool is added into **Custom Consoles** settings for manual input of subscriber ID to call it.





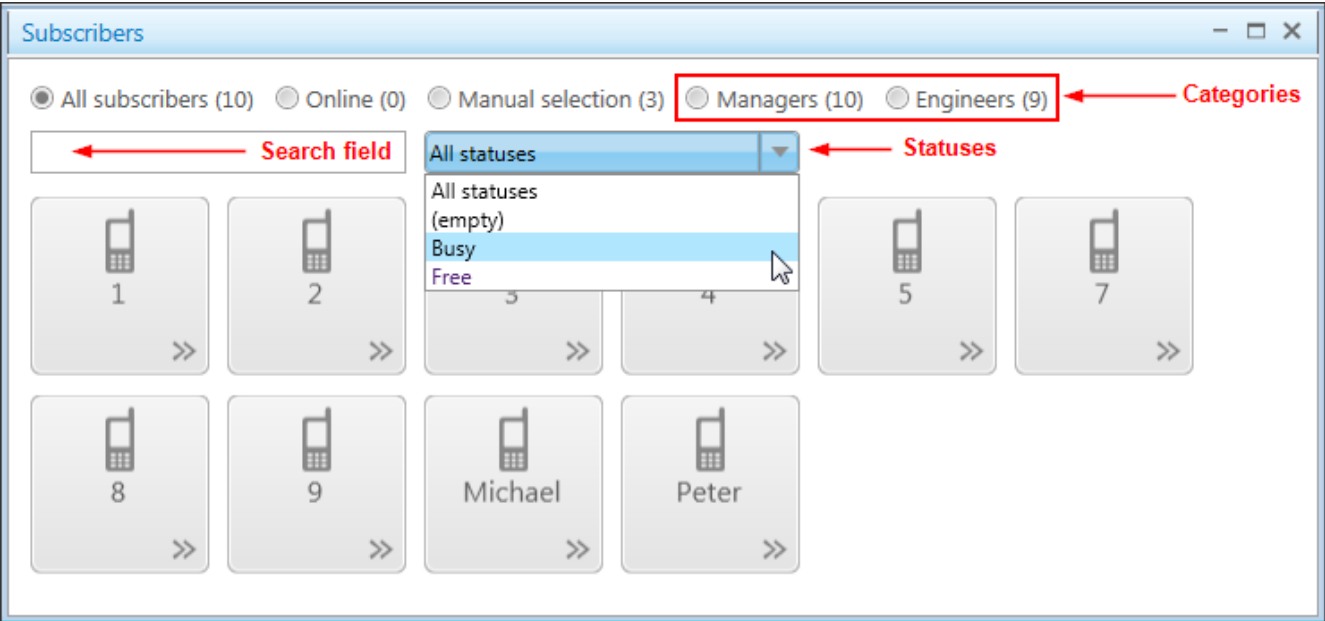
8. Emergency alerts and alarms are colored red now in the **Event Log**.

Events: records - 82

Move column header here for grouping

Direction	Event Type
←	Lone Worker
←	Lone Worker
←	Lone Worker
←	Lone Worker
←	Lone Worker
←	Lone Worker
←	Lone Worker
←	Lone Worker
←	Lone Worker
←	Lone Worker
→	Alarm
→	Alarm
→	Alarm
→	Alarm

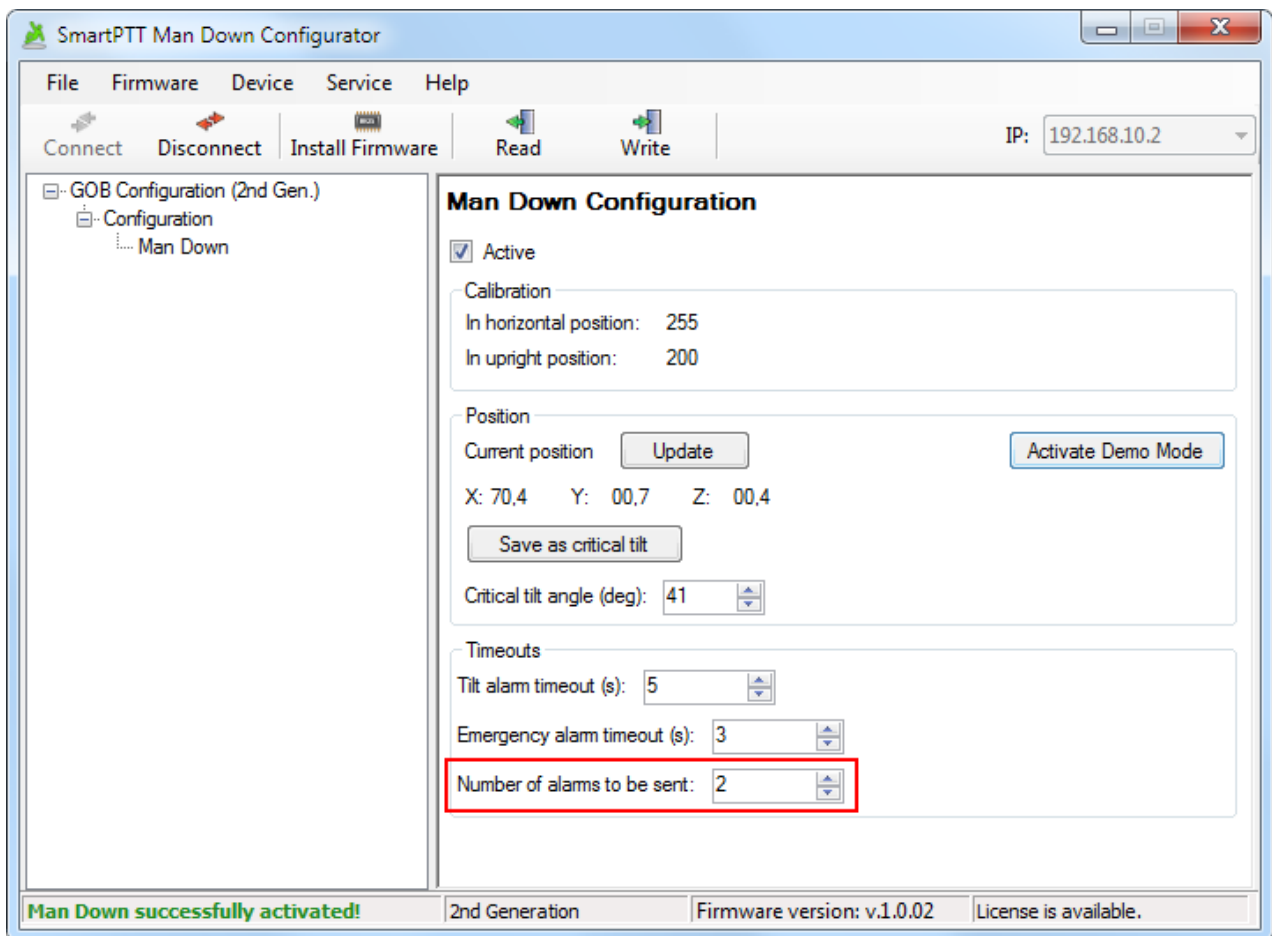
9. Added the sorting option for subscribers in the Subscriber panel.



10. If you delete the subscriber or dispatcher, whose icon was on the subscriber field, the icon becomes changeable.

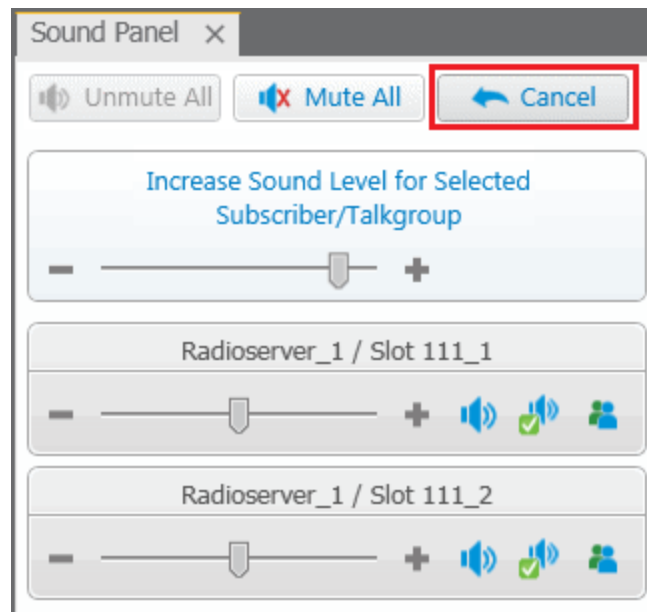
11. Emergency signal can now be muted not only when the preset group call is made, but during the private call to the emergency in initiator.

12. Option for changing the number of emergency alerts is added into SmartPTT Man Down Configurator.



## Deprecated features

The **Sound Panel**, including **Cancel** feature that calls off the last action.



## Known issues

1. Incoming calls from mobile and web clients are not supported in cross patch, because they are recognized as outgoing calls.
2. The dispatch console may not respond after changing the device in the **Audio Input** and **Audio Output** sections in the **General Settings** tab of the **Sound Settings** panel (**Main menu > Settings > Sound**).
3. Rarely, after emergency alert is received, an error may occur that leads to the dispatch console closing.