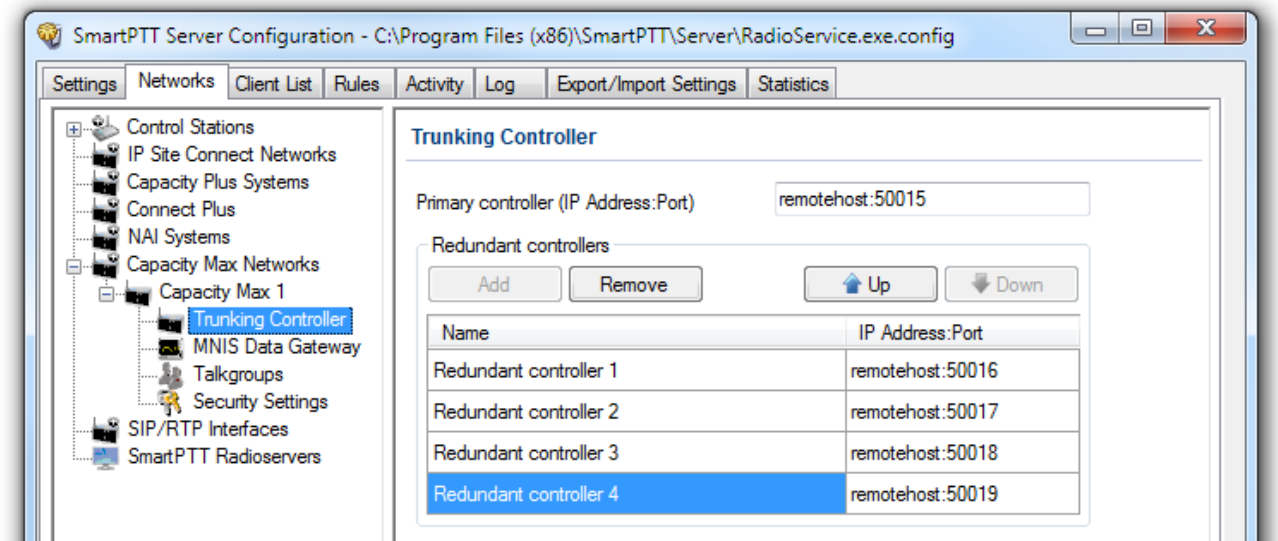


SmartPTT Enterprise 9.1

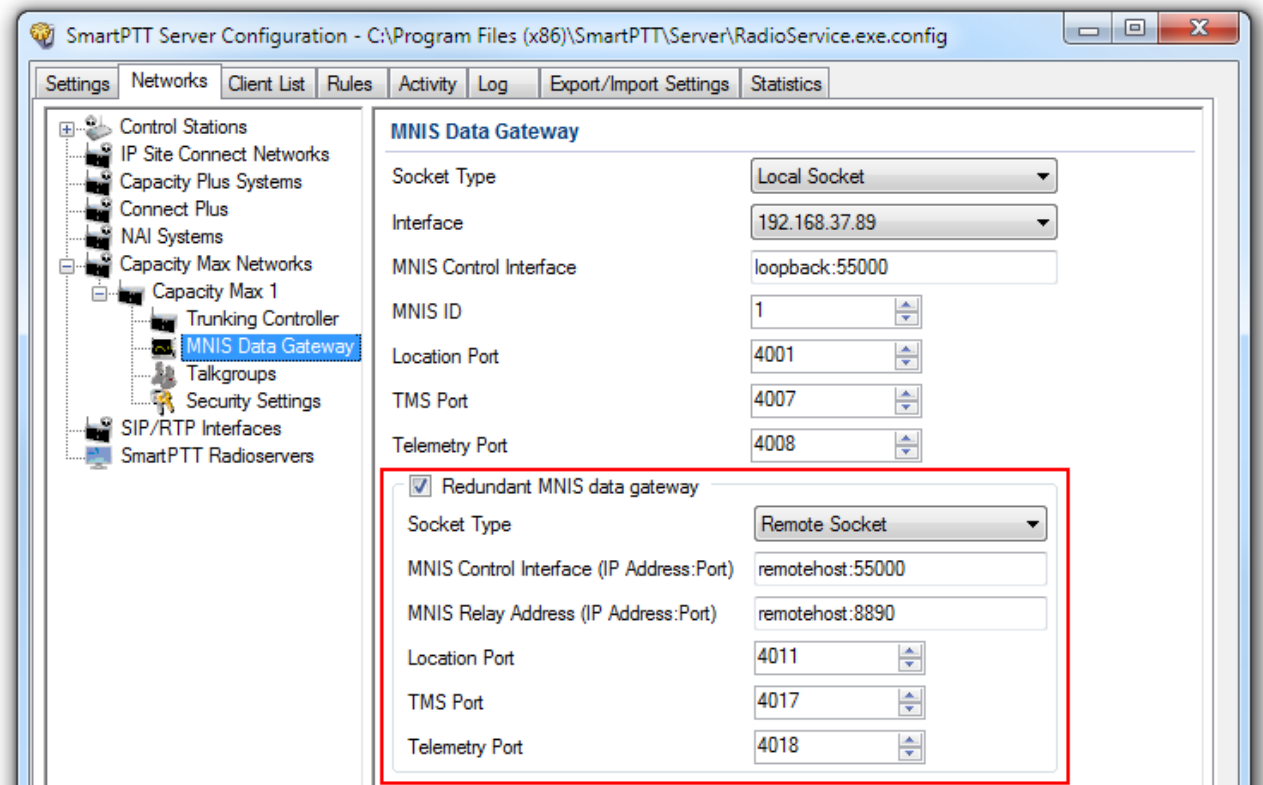
Release Notes

New and updated features

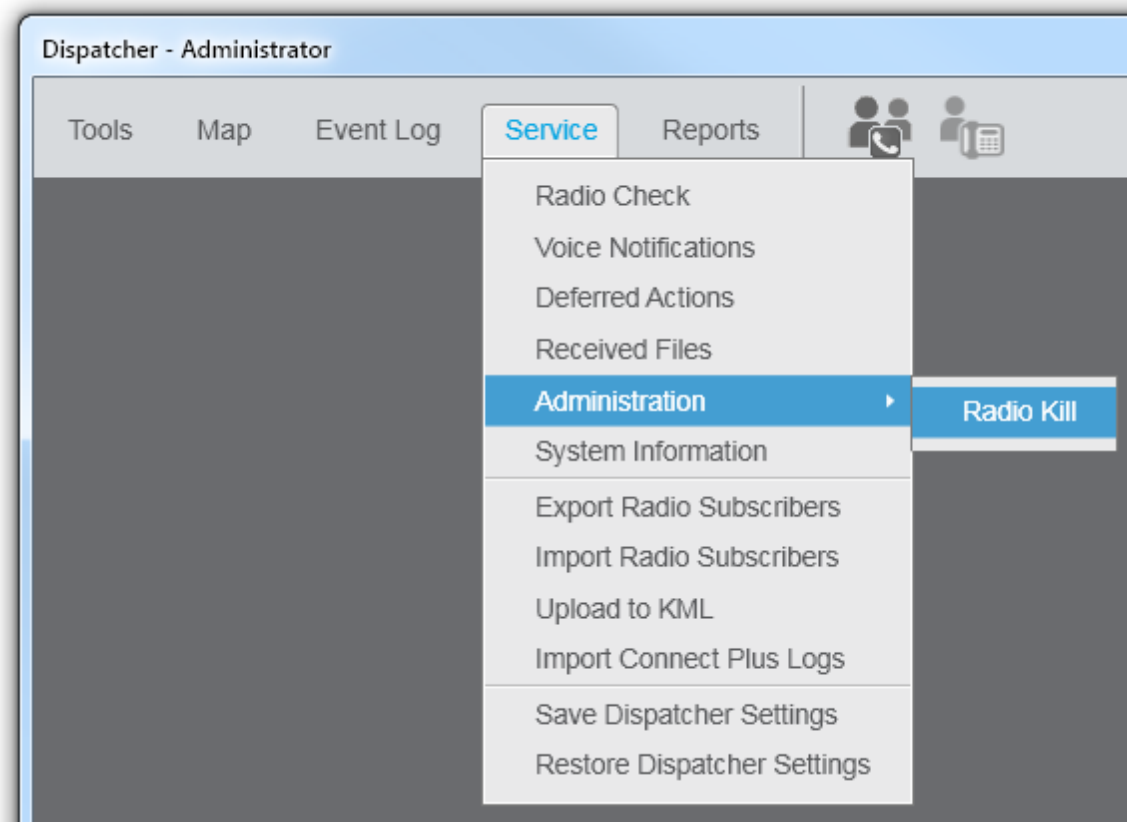
1. Support for Capacity Max R2.7.
2. Support for up to 4 redundant trunking controllers in each Capacity Max network.



- Support for redundant MNIS Data Gateway in each Capacity Max network.

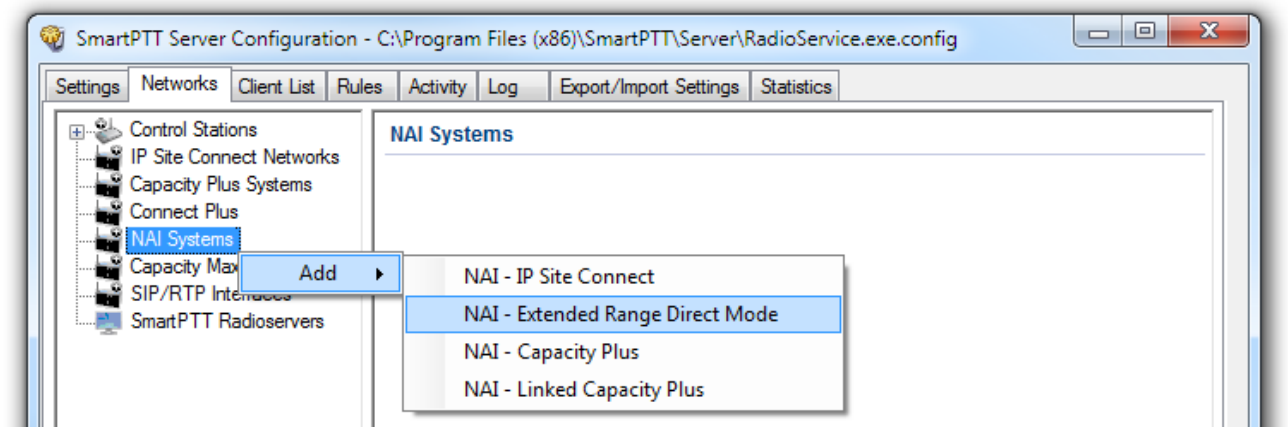


4. Support for the “Radio Kill” feature in Capacity Max networks. This command completely disables a subscriber unit (it can be restored only in the service center).



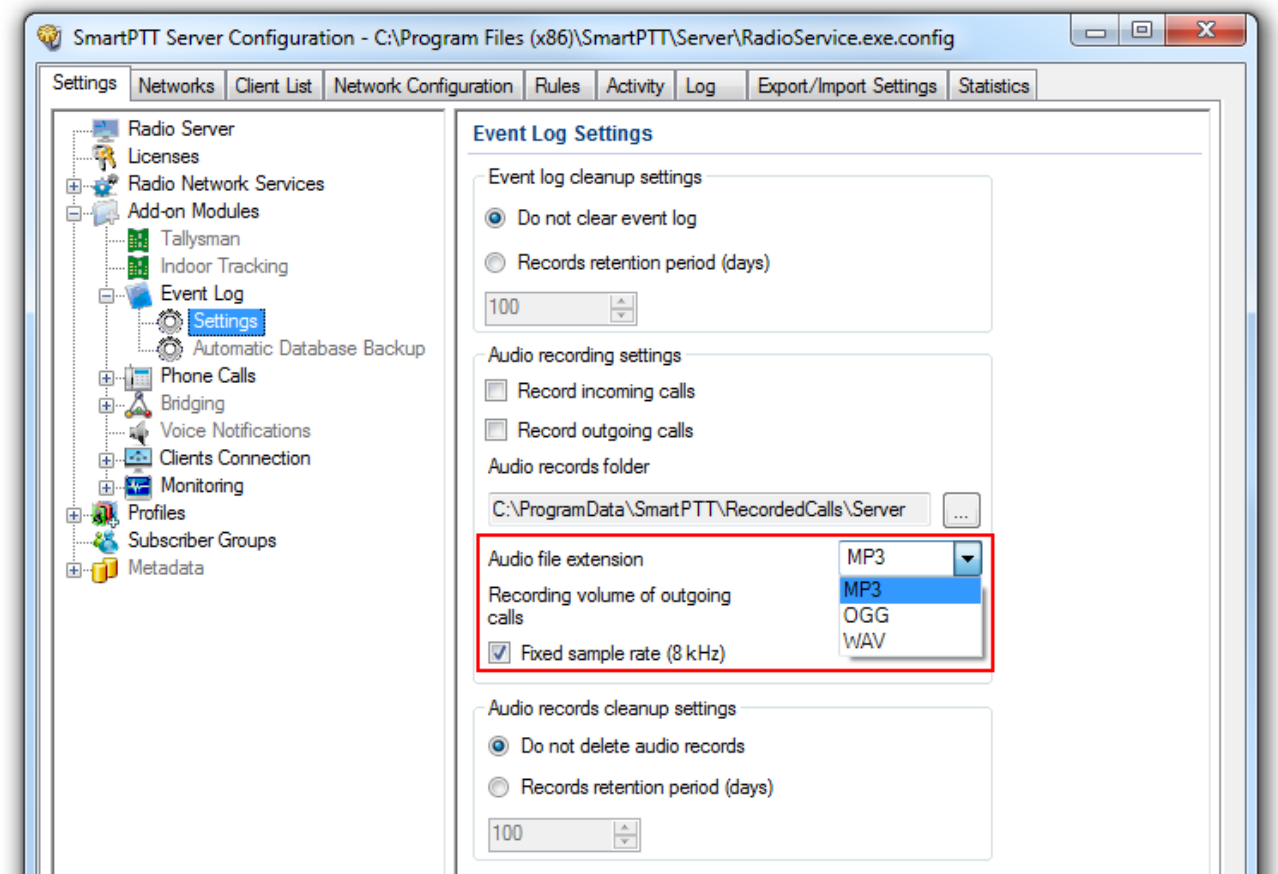
5. Support for “Stun” and “Revive” commands for Capacity Max subscribers.
6. Support for control station connection to the Capacity Max network.

7. Support for Extended Range Direct Mode configuration in the NAI systems.

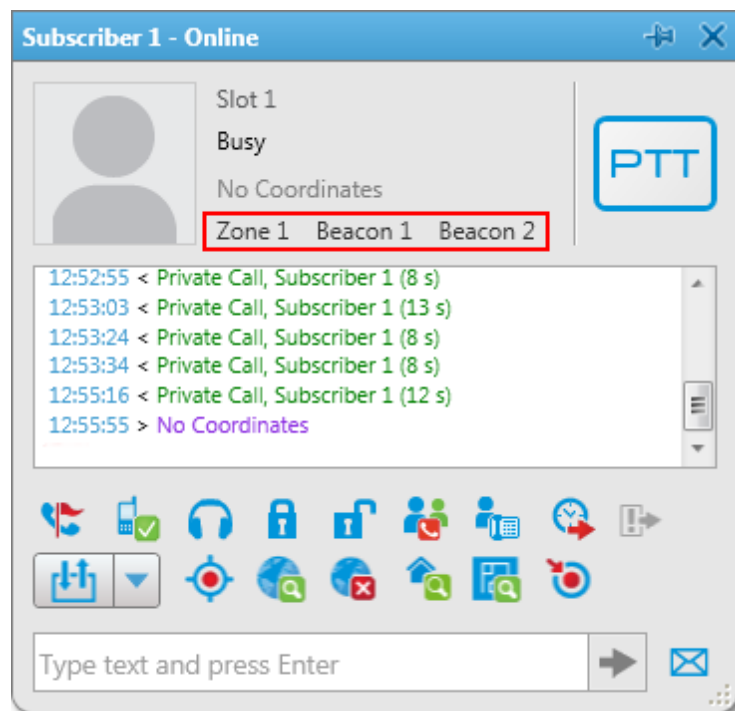


8. Displaying connection and activity statuses for system components.

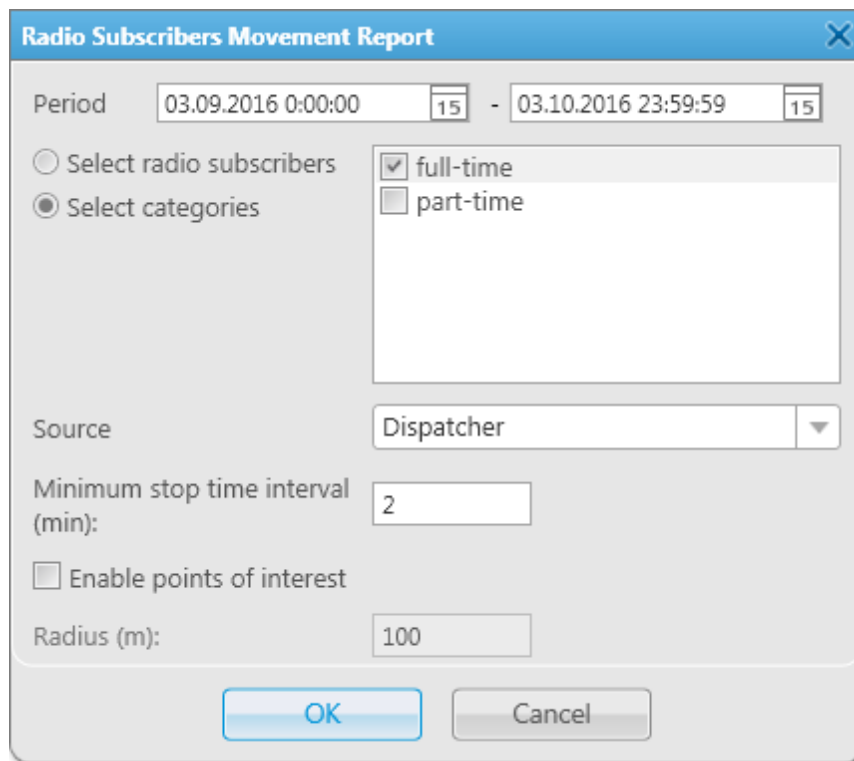
9. Support for different audio record formats: OGG, MP3 and WAV.



10. Support for beacon names in the subscriber call window while in active Indoor mode.



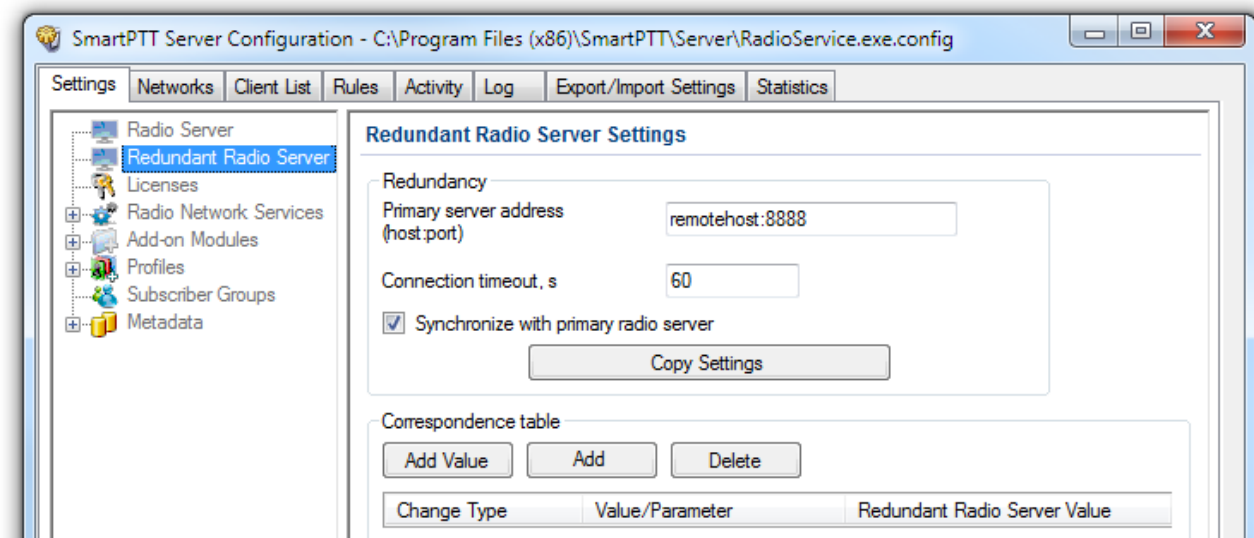
11. Added Radio Subscriber Movement Report.



The dialog box titled "Radio Subscribers Movement Report" contains the following fields and controls:

- Period:** Two date-time pickers showing "03.09.2016 0:00:00" and "03.10.2016 23:59:59".
- Select radio subscribers:** A radio button.
- Select categories:** A radio button.
- Categories:** A list box with "full-time" (checked) and "part-time" (unchecked).
- Source:** A dropdown menu showing "Dispatcher".
- Minimum stop time interval (min):** A text box containing "2".
- Enable points of interest:** An unchecked checkbox.
- Radius (m):** A text box containing "100".
- Buttons:** "OK" and "Cancel".

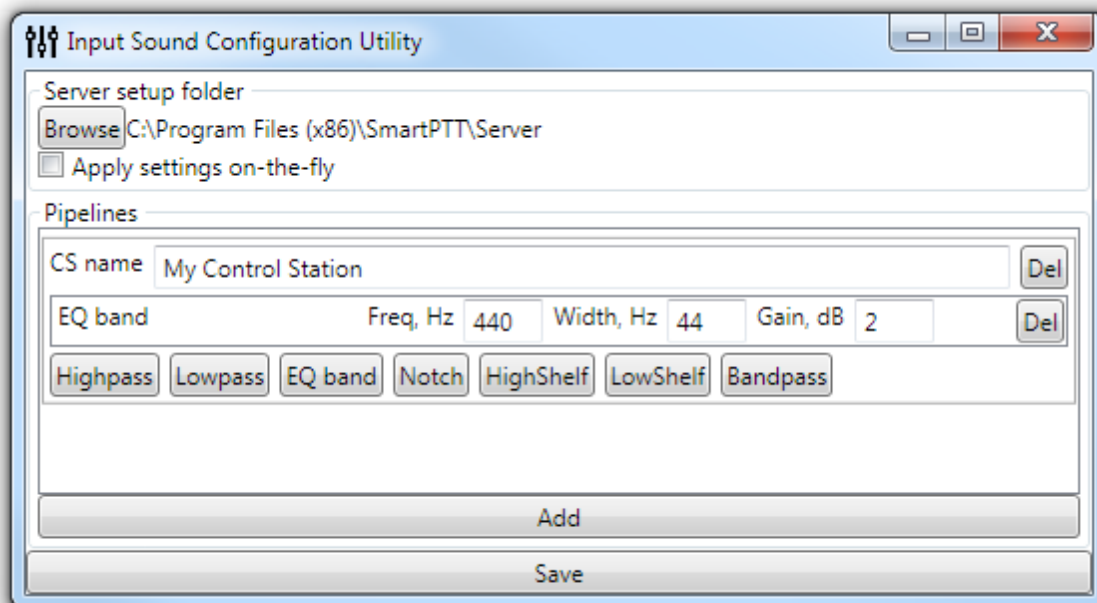
12. Support for synchronization between primary and redundant radioserver.



The "SmartPTT Server Configuration" window shows the "Redundant Radio Server Settings" tab. The left sidebar lists various configuration categories, with "Redundant Radio Server" selected. The main area contains the following settings:

- Redundancy:**
 - Primary server address (host:port):** A text box containing "remotehost:8888".
 - Connection timeout, s:** A text box containing "60".
 - Synchronize with primary radio server:** A checked checkbox.
 - Copy Settings:** A button.
- Correspondence table:**
 - Add Value:** A button.
 - Add:** A button.
 - Delete:** A button.
 - Change Type:** A button.
 - Value/Parameter:** A text box.
 - Redundant Radio Server Value:** A text box.

13. Support for optional audio processing coming from control stations.



Enhancements

1. In the “SmartPTT Server Configuration” program all systems moved from the “Settings” tab to the new tab called “Networks”.
2. Remote control station can be connected to “SmartPTT Server” using the same IP address (different ports are sufficient).
3. Added different ports for remote control station to receive different types of data.
4. Added system messages to inform users about insufficient free space in the database.
5. “Valid” velocity of the subscriber risen up to 250 m/s. If velocity is greater than that, GPS data considers wrong.
6. Added the dialog on closing “SmartPTT Dispatcher” with unsaved changes.
7. Version and build were added to the service logs of both “SmartPTT Server” and “SmartPTT Dispatcher”.
8. Dramatically increased the maximum number of records in Event Log (200,000 by default).
9. Added filter by radio ID in the Activity log of “SmartPTT Server”.
10. Added timestamps into the GPS responds in the Activity tab of SmartPTT Server.
11. Added copying and pasting talkgroups to the “Connect Plus” system.

12. Added the “Network ID” for control stations.
13. Added “SmartPTT Dispatcher” context menu called by the right-click on Google Maps.
14. Added an ability of separate activation of the web clients, mobile clients and API-connected clients.
15. WebSocket Server settings moved to the “Client Connections” menu.
16. Added limits for subscription on TMS receiving from subscribers added to the “Connect Plus” network.
17. Web Client user interface is optimized for the mobile web browsers.

Removed functions

- Support for Capacity Max 2.6 and earlier is ended.

Fixed issues

1. In some languages incomplete list of codecs was offered in the WebSocket Server configuration menu.
2. BeFree 10 console could not be installed properly.
3. “SmartPTT Dipsatcher” did not started if closed with active emergency.
4. Creating a new Capacity Max network could be unavailable.
5. Subscriber who initiated emergency, could be dimmed on the Indoor map when it should be highlighted.
6. Coverage map could not be activated in the systems with the MOTOTRBO Network Interface Service 2.70 program.

Known issues

1. Operator cannot actively participate in the phone call performed over the radio system.
2. When another operator, web client or mobile client joins the patch call, everybody starts hearing only the transmission from its microphone.
3. Operator cannot end a private call, if subscriber changes channel during the call.
4. Subscriber is being shown near the latest beacon even if he leaves the location.

Additional information

1. Invalid licenses are added to the blacklist.
2. Adding a new system and network is slightly simplified.
3. Documentation is updated.

