

SmartPTT SCADA

SMARTPTT AND SMARTPTT EXPRESS EXTENTION FOR REMOTE EQUIPMENT CONTROL AND ASSET MANAGEMENT

FULL POTENTIAL OF SCADA SYSTEM IN YOUR SMARTPTT DISPATCH CONSOLE

Raise efficiency of business processes management with remote equipment control and corresponding staff coordination



 **ENERGY**  **UTILITIES**  **MINING**  **OIL & GAS**  **AGRICULTURE**  **EMERGENCY SERVICES**



Data processing and visualization



Remote real time monitoring



Remote equipment control



Accounting for resource consumption



Simultaneous control of a large amount of facilities with notification on the map



Visualization of the controlled facility using its photo or mnemonic schemes to understand what's happening there



Alerts to dispatcher about incidents and parameter deviations



Automated notifications to responsible people about emergencies

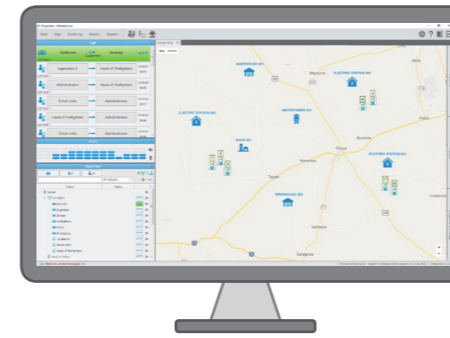


Historical trends of equipment performance and event logging

FULL POTENTIAL OF SCADA SYSTEM IN YOUR SMARTPTT DISPATCH CONSOLE

DETECT FAILURES IMMEDIATELY AND CORRECT THEM BEFORE THEY BECOME A CATASTROPHE

LOWER THE NUMBER OF NEEDLESS ON-SITE VISITS AND USE WORKFORCE AND VEHICLES WHERE THEY ARE REALLY ESSENTIAL



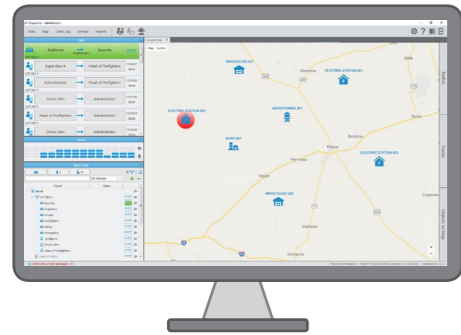
Simultaneous control of a large amount of facilities with visualization on the map and on SmartPTT custom console



Real-time equipment monitoring using a set of widgets (gauges, bars, indicators, boards, graphs and so on)



Remote equipment control using a set of control buttons



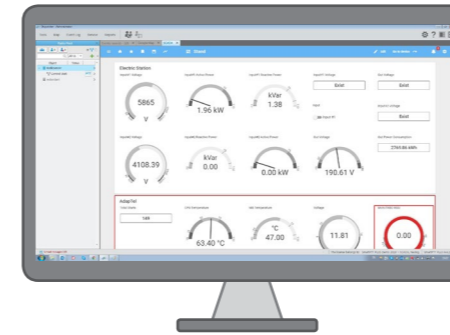
Notifications on the map to draw attention to the problem point



Detailed information by clicking on the point (out of range parameters are highlighted in color)



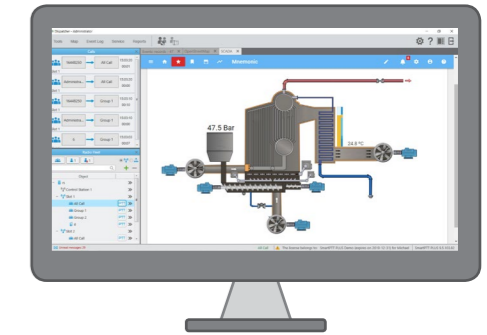
Customized user interface with 3 different day color themes and 1-night color theme to choose. Opt the way of parameters' visualization and set the location of widgets on the screen using drag&drop tool



Special color scheme with limited use of color draws operator's attention to the parameters that deviate from a normal state while other elements remain invisible



Historical trends of equipment performance and event logging allow scheduling maintenance and improving workflow



Visualization of the current state of the controlled facility using mnemonic schemes or facility's photo for better understanding of what is happening there

SINGLE SMARTPTT DISPATCHING SYSTEM WITH SMARTPTT SCADA MODULE

is a comprehensive solution for business process optimization

VS

TRADITIONAL SCADA SOFTWARE (HMI)

It is so difficult to master and run a system based on traditional software for SCADA systems that only programmers can do it as a rule

Complicated programming and drawing mnemonic schemes

No additional features provided by dispatch software, e.g.:

- The dispatcher does not know exactly the staff location and exposes personnel to danger by executing control commands
- The dispatcher needs to remember who to inform or call, and spend time sending messages

SITUATIONAL CONTROL

All personnel, controlled facilities, and their status - on one screen

HIGH-QUALITY DECISION-MAKING

Decisions are made on the facts and in view of the possible danger to personnel in the vicinity of the equipment

Automated notifications improves dispatcher's efficiency

More effective management of technological and production processes through remote control of technological equipment and appropriate coordination of personnel

RAPID RESPONSE IN EMERGENCIES

In case of emergency or malfunction at the facility the dispatcher sends the closest specialist (based upon their location information) to resolve the issue

REDUCED LOAD ON THE DISPATCHER

Informing responsible employees about emergency situations, accidents, breakdowns is made automatically, according to the set rules of the notification (including messages on radios due to the integration with SmartPTT)

QUICK START

Fast and simple process of system launch from scratch without special knowledge and skills in programming

VS

SEPARATE SCADA SYSTEMS

The dispatcher wastes valuable time to understand and assess the situation and make the right decision based on the data obtained from two different, unrelated systems.

The dispatcher needs to remember who to inform or call, and spend time sending messages

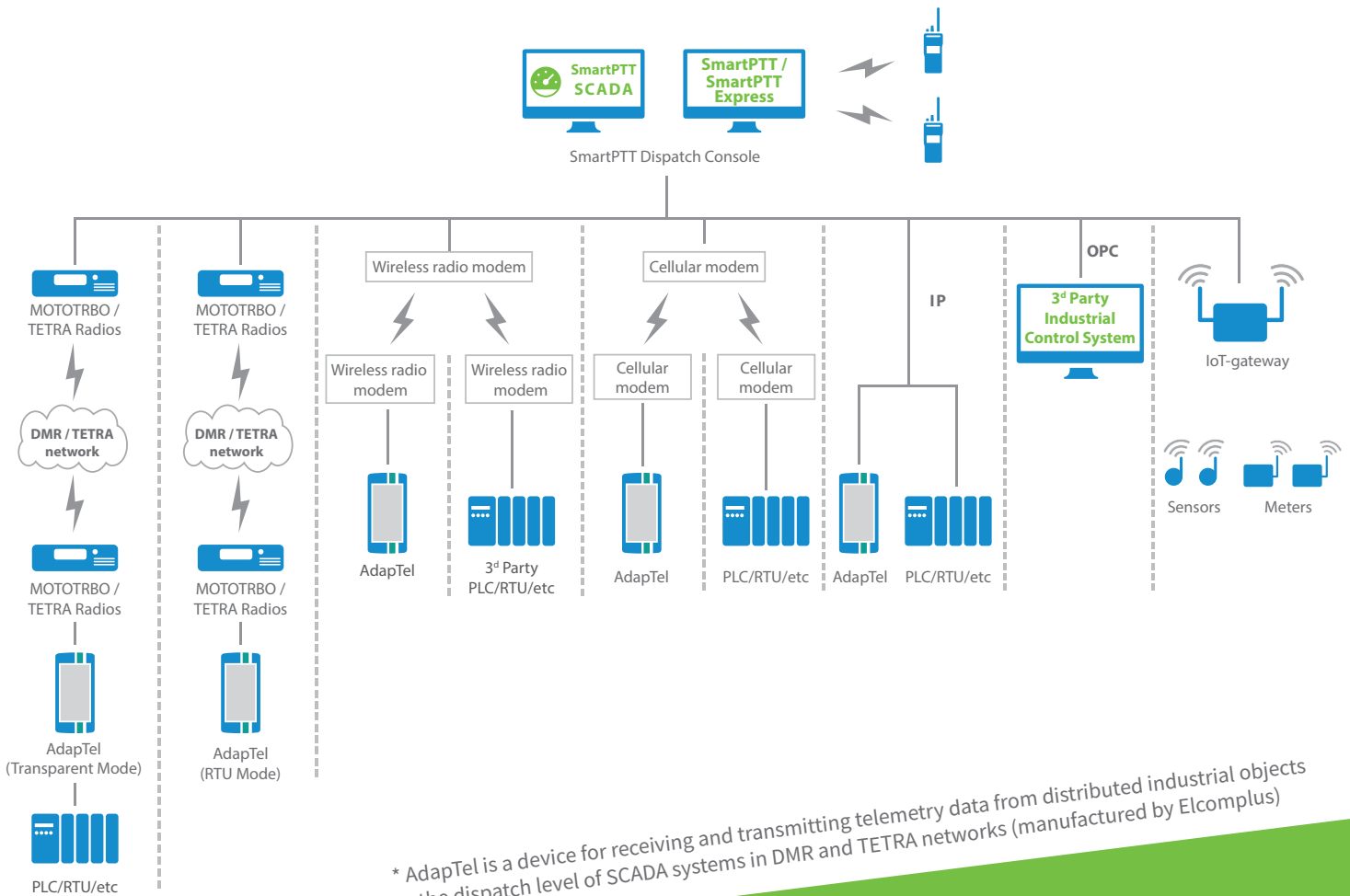
NOT ONLY DMR

NOT ONLY ADAPTEL

DMR and TETRA
IP network
VHF radio modems
Cellular modems
Broadband
equipment (Wi-Fi,
MESH, etc.)
LoRaWAN
Etc.

YOU CAN CONNECT ADAPTEL* OR ANY THIRD-PARTY DEVICE TO SMARTPTT SCADA VIA ANY COMMUNICATION CHANNEL

Motorola ACE
PLC / RTUs
Meters
and sensors
with digital
interface
Other
devices



SMARTPTT SCADA IS YOUR STEP TOWARDS EFFECTIVE BUSINESS PROCESS MANAGEMENT

MONITOR, CONTROL, ANALYZE, AND COORDINATE

sales@smartptt.com
smartptt.com