



Integrated Solution for MOTOTRBO™



SmartPTT RG-1000e

SmartPTT RG-1000e is a hardware radio gateway that is used to connect MOTOTRBO, Tetra MTM, ASTRO APX, ASTRO XTL, MTR2000, VX-9000 radios to SmartPTT Radioserver using IP connection in private networks or Internet.

Benefits

Easy configuration and deployment of the system

- Absence of radio frequency interference due to geographically distributed control stations
- Time and resource effective deployment of radio systems
- Operation in harsh environments

Cost reduction

- Decreased number of radioservers required
- No expenses on soundcards for the radioserver
- Low-cost maintenance of the system

Especially Needed If

- There is no direct IP connection of radio servers to repeaters or solution architecture does not provide this feature
- The radioserver soundcard does not support a sufficient number of audio channels to connect to control stations
- In case of narrow frequency range to avoid interference between control stations (for example, some airports)
- For communication between subscribers and dispatchers in locations, where installation of repeaters is not economically feasible

Top Solution in Verticals

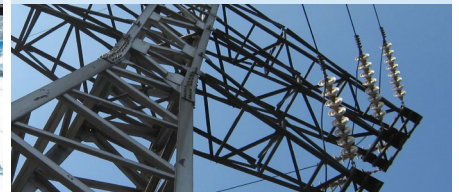
TRANSPORTATION



LOGISTICS



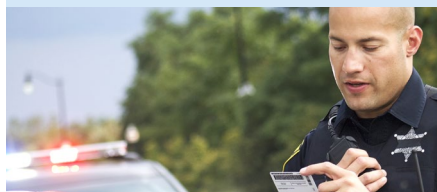
ENERGY



OIL & GAS



PUBLIC SAFETY



AMBULANCE



Enhanced RG-1000e

- Supports non-MOTOTRBO radios*
- Connects up to 2 control radios to each RG-1000e for parallel operation
- Remote configuration and internal software update

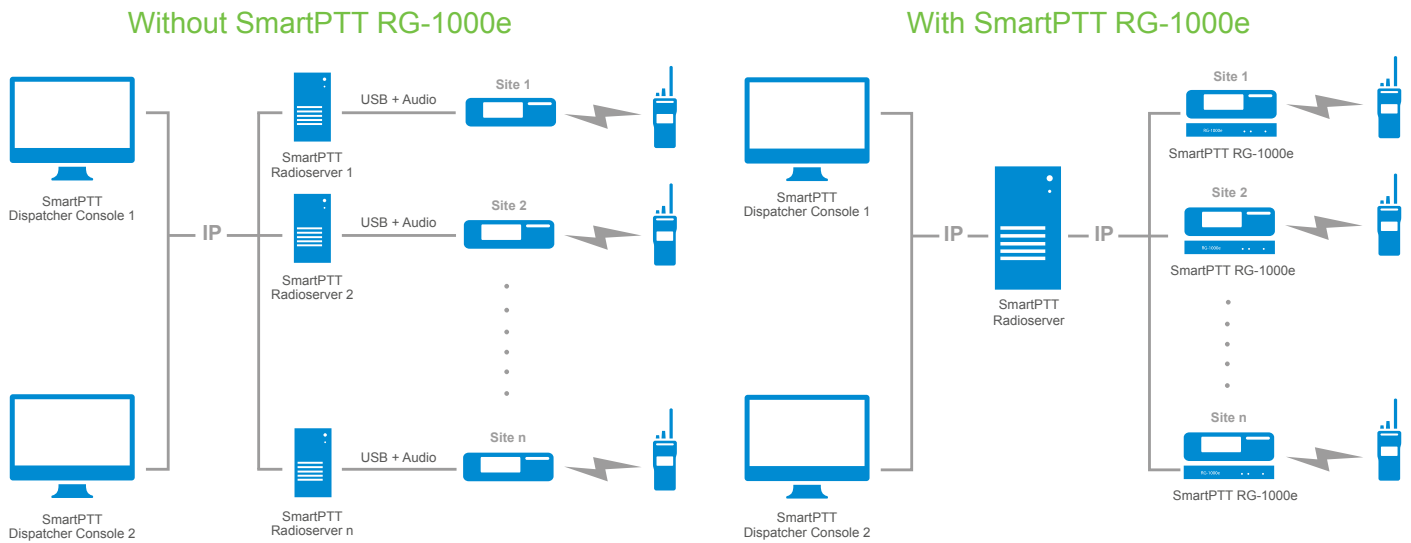


IEC/
EN60950-1



* Provides voice-only features for non-MOTOTRBO radios

SmartPTT RG-1000e in conventional and trunking MOTOTRBO radio systems without direct IP connection to repeaters



RG-1000e Gateway Specification

Network Interface Parameters

Connector	RJ45 LAN
Standard	10BASE-T (IEEE 802.3) / 100BASE-TX (IEEE 802.3u)

Support of Radio Operation Modes

Support of MOTOTRBO radio models	EMEA region: DM4000 Family APAC region: XiR M8600i, XiR M8600 NA region: XPR 5000 and XPR 5000e Family LA region: DGM 8***e, DGM 5***e, DGM 8***, DGM 5***, DEM500
Support of MOTOTRBO operation modes	Digital and Analog
Support of non-MOTOTRBO radio models	MTM, APX/XTL, MTR2000, VX-9000 etc. (group call service only)

Power

Power supply voltage	10.5 to 15.0 VDC
Power consumption	2 W or less

Design

Gateway dimensions	180x144x30 mm (7.09x5.67x1.18 inches)
--------------------	---------------------------------------

Operating Conditions

Operating temperature	-20° to +60°C (-4° to 140°F)
Humidity	5% to 85% at 30°C (86°F)
Operating hours	24x7

Note: MOTOTRBO control stations should be purchased separately.