



Dispatch Communication Solution
FOR SCHOOLS

**SAFE AND SECURE
LEARNING ENVIRONMENT**

**DO YOU KNOW
WHERE YOUR BUSES
ARE AND WHERE
THEY'VE BEEN?**

**DO YOU HAVE
RADIO DISCIPLINE
PROBLEMS WITH
RADIO USERS?**

**DO YOU HAVE
INTEROPERABILITY
WITH PUBLIC SAFETY
AGENCIES?**

SmartPTT is a voice dispatching software and data application designed to provide users with control over their MOTOTRBO radio system's voice and data capabilities thus ensuring safe and efficient teaching and learning experience.

SAFE SCHOOLS, PROTECTED CHILDREN

The safety of children and faculty in any school is always the highest priority. Using the emergency functions of the MOTOTRBO radio can alert that the accident has occurred. The dispatcher can easily identify who is in trouble and where they are located.

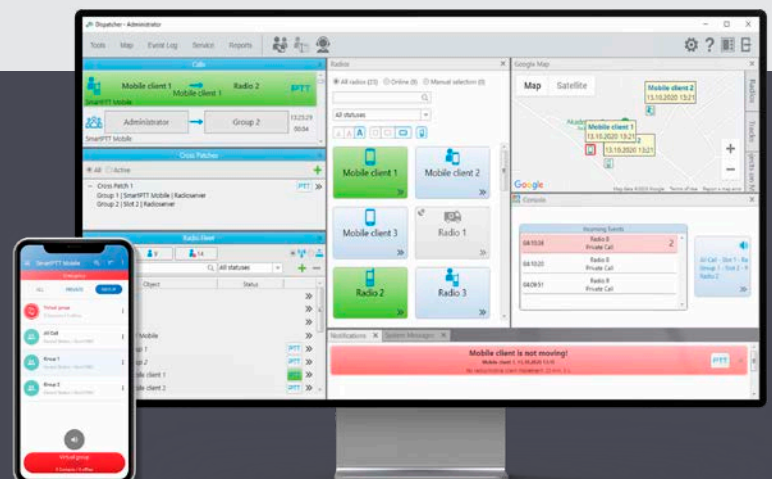
With SmartPTT, a dispatcher

can use the transmit interrupt feature to take control of a radio channel in the case of an emergency or a stuck mic condition.

The voice and event logs can be used to investigate the response to an emergency or to ensure that staff accomplished tasks in a timely manner.

Additionally, Rules & Alerts can be used to notify dispatch of staff inactivity or entry/exit from off-limits locations. Remote listening and video streaming from Avigilon IP cameras enable the SmartPTT dispatcher to gain situational awareness to respond more accurately to the emergency.

SmartPTT enables dispatchers to talk to different radios, talkgroups, smartphones, and radio systems. The custom console tool enables dispatchers to layout the user interface to clearly identify different talkgroups or radio systems and who is talking. Whether using a radio, a telephone, or a smartphone, SmartPTT will provide seamless communications.

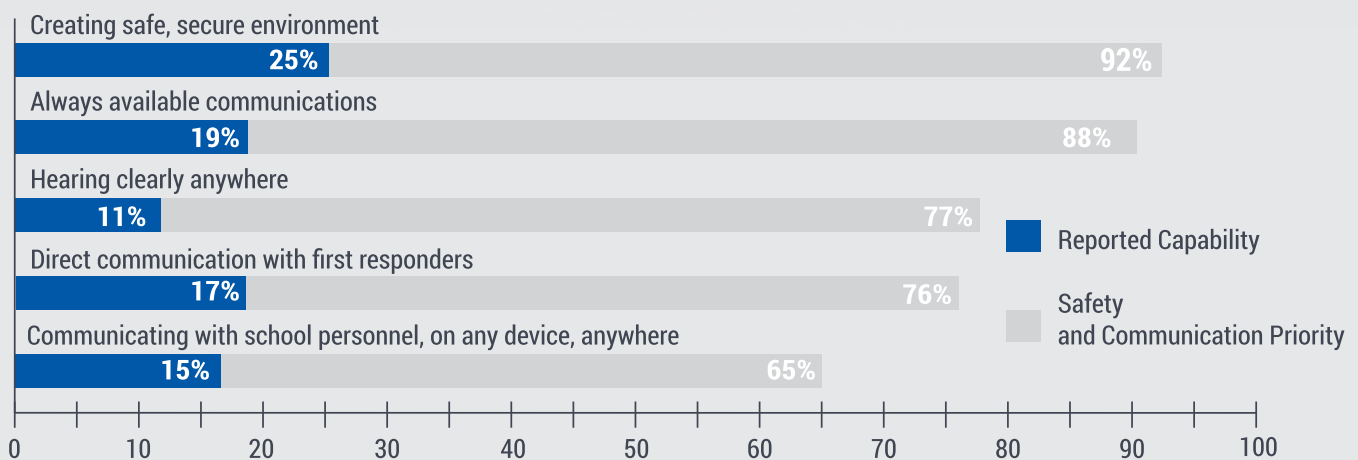


VITAL INTEROPERABILITY

When an incident occurs on the campus and law enforcement comes on-site, it is important for school security and administrators to have radio communications with Public Safety Agencies.

SmartPTT supports donor radios such as P25, so the dispatcher can 'patch' the school's MOTOTRBO radio system to the law enforcement's P25 radio system. This helps provide seamless communications with law enforcement to prevent delays or communication failures

THE DISCONNECT: SCHOOL PRIORITIES VS SCHOOL CAPABILITIES



SOURCES:

1. The Role of Technology in Improving K-12 School Safety (2016) The Rand Corporation, the Police Executive Research Forum, RTI International, and the University of Denver
2. MSI 2017 US EDUCATION SURVEY

CONNECTED CAMPUS



Adding more radios to the radio system can be costly. SmartPTT Mobile (Available in SmartPTT Enterprise) is a cost-effective solution to add users to the radio system without a lot of costs by using existing smartphones. With access to Wi-Fi, LTE, or 4G networks staff members will be able to communicate to other radios, mobile app

users, or groups while on campus or at home. SmartPTT Mobile allows to create or expand an on-campus communication network, where staff and students can efficiently communicate via voice and text, create talk groups, or inform about emergencies.

SMARTPTT CORE CAPABILITIES



VOICE
DISPATCH



EMERGENCY
MANAGEMENT



TELEMETRY



RULES
AND ALERTS



RADIO FLEET
MANAGEMENT



CUSTOM
CONSOLE



EVENT
LOGGING



JOB
TICKETING



TEXT
MESSAGES

DISPATCHER ACCESS TO VIDEO SURVEILLANCE

The educational environment needs to secure school buildings from weapons, violence, and unwanted behavior. The use of video surveillance is an indispensable aid to identifying and resolving issues as they arise. Using cameras can help the security staff track visitors, discourage misbehavior, and prevent bullying, drug-related activity, and violence. The SmartPTT's integration

to Avigilon's video management software enables dispatchers to open video streams in the dispatch console to gain situational awareness in an area. When a radio user has an emergency, a dispatcher can choose cameras near the user to gain a visual understanding of the situation. This enables the dispatcher to effectively manage responses to the emergency.

SMARTPTT OPTIONAL CAPABILITIES



VOICE
RECORDING



GPS
LOCATION



INDOOR
LOCATION



RADIO NETWORK
BRIDGING



IP CAMERA
SUPPORT



WEB
CLIENT



NETWORK
MONITORING



DIRECT IP
CONNECTION



TELEPHONE
INTERCONNECT

SAFE WAY TO SCHOOL

SmartPTT allows to manage logistics, protect students on their way to school, and effectively respond to emergencies by remote monitoring and GPS location of the buses.

Ensure school buses adhere to assigned routes and bus drivers are letting students off at authorized stops.

SmartPTT can let the dispatcher know if an unauthorized stop is made or in case of a route deviation.

When bus drivers need to talk to dispatch, they can send dispatch a «Request to Talk» text message. An emergency call function alerts dispatch when drivers need assistance.

Excessive idling wastes gas and causes additional wear and tear on the vehicles. SmartPTT's reporting can let dispatchers know if the buses are idling unnecessarily.



2009

Year SmartPTT was 1st released

90

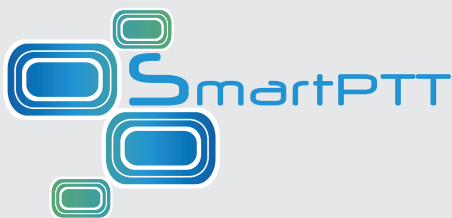
Customers in over 90 countries worldwide

250

More than 250 dealers around the world

2000

More than 2000 customers



THE SMART CHOICE FOR YOUR FUTURE

Elcomplus, Inc.
290 NW 165th St, Ste P-800A, 3rd Flr
Miami, FL, 33169, USA
sales@smartptt.com
+1-786-362-5525



Motorola professional radio application partner

www.smartptt.com



SOLD AND SUPPORTED