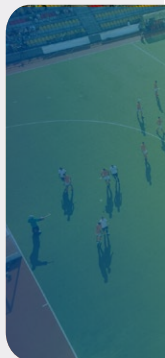
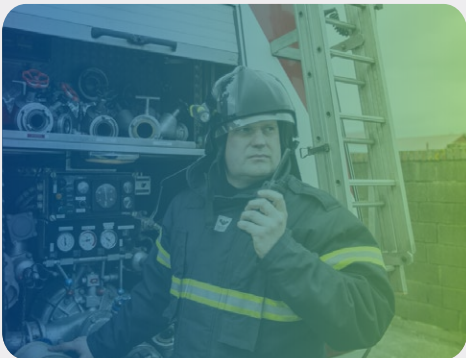
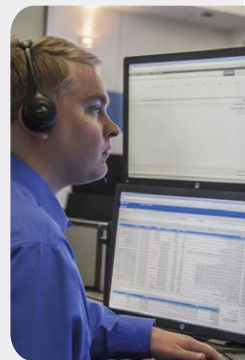


Integrated dispatch solution for MOTOTRBO™

# SmartPTT

# SMARTPTT IS AN INTEGRATED VOICE DISPATCH AND DATA APPLICATION FOR MOTOROLA MOTOTRBO RADIO SYSTEMS



# VERTICALS



## MINING

Prevent accidents by transmitting blast alarms and weather notifications

Reduce queues and inactive mining shovels to maximize productivity



## OIL & GAS

Quickly identify a subscriber in distress and their location

Dispatching the closest resource reduces wasted man-hours, fuel, and vehicle wear and tear



## TRANSPORTATION

Control hazardous or off-limits areas in airports such as runways

Track the location of baggage trucks, fuel trucks, and snow plows



## HEALTHCARE

Quickly respond to staff in distress

Interoperate with first responders (e.g. Life Flight, Ambulance, Police)



## SERVICE & HOSPITALITY

Improve guests' experience by ensuring quick and accurate responses to their requests

Emergency management and location positioning enable fast reaction to staff accidents



## EDUCATION

Interoperability with public safety during incidents

Track the routes of school buses and control the deviations from them



## PUBLIC SAFETY

Interoperability between different agencies during emergencies

Enhanced coordination capabilities and reduced response time



## SPORT

Control fans' activities and provide for the safety of the teams and guests

Know the location of staff for faster responses during emergencies or incidents



## UTILITIES

Reduce outage times

Manage the assignment and status of work orders



## MANUFACTURING

Improve coordination of tasks across production teams

Monitor staff activities in hazardous work areas

# THE ISSUES FACED BY ANY ORGANIZATION THAT VALUES THEIR TIME, MONEY AND RESOURCES



How to make communications more efficient?

How to reduce costs?

How to ensure worker safety?

How to maximize worker efficiency?

# How will SmartPTT benefit my organization?



## EFFICIENT COMMUNICATION

- Clearly identify who is talking and on which talkgroup
- Simultaneously monitor multiple channels without using numerous radios or having to change channels on a radio
- Interoperability between different types of radio systems (e.g. Capacity Plus, P25, Tetra, etc)



## WORKER SAFETY

- Knowing the location (indoors or outdoors) of a radio user provides faster response times during an emergency
- Emergency alerts notify the dispatcher of a radio user in distress
- Notify radio users when they are working in a hazardous work area



## COST SAVING

- Control work force size by efficiently distributing work tasks
- Decrease fuel consumption and wear and tear on vehicles
- Avoid costly litigation using voice and event logs to prove processes were correctly followed



## WORKER EFFICIENCY

- Monitor the progress of assigned tasks through to completion to ensure tasks are done timely and accurately
- Employee accountability using reports and event logs
- Be sure of the employees' location at their workplaces

# CORE FEATURES



## VOICE DISPATCH

Instant communications for All Call, Talkgroup Calls, and Private Calls. Cross-patch talkgroups or different radio systems

## TEXT AND DATA TRANSFER

Text messages, e-mails and SMS exchange between the dispatcher console, radios, talkgroups, and smartphones



## GPS LOCATION\*

Know the exact workers location at any moment and enhance their safety by control of their entering hazardous zones

## EMERGENCY MANAGEMENT

Dispatcher is alerted to a radio user in distress when the emergency button is pressed, Man Down is activated, or the Lone Worker timer times out



## EVENT LOG

All events (e.g. calls, texts, ARS, radio disable) are stored for incident investigation

## JOB TICKETING

Create, assign, and control work orders to ensure timely and accurate completion of tasks



## VOICE RECORDING\*

Instant recall recorder for dispatchers and voice logging recorder for system administrators

## TELEMETRY

Use the GPIO pins on mobile radios to be notified of events (i.e. door open/ closed) or control a device (i.e. device on/off)



## FLEET MANAGEMENT

Easily manage the details of individual and groups of subscribers, as well as create customizable rules and alerts

\*Features are standard in SmartPTT Enterprise and could be optional in SmartPTT PLUS depending on the region

# OPTIONAL FEATURES

## IP CAMERAS

The real-time video stream from Avigilon VMS system on your dispatch console



## RADIO NETWORK BRIDGING

Connect subscribers on different radio systems for interoperability or system migration

## INDOOR LOCATION

Monitor the position of employees inside buildings and other locations where tracking location is not available



## MOBILE APPLICATION\*

Connect to a radio system from a smartphone via LTE or Wi-Fi even when outside of the RF coverage area

## TELEPHONE INTERCONNECT

Seamless communications between radios, dispatcher and telephone subscribers



## WEB CLIENT

Communicate with talkgroups and radios, view the GPS location of radios, and exchange text messages from anywhere using a PC's web browser

## RADIO NETWORK MONITORING

Real-time radio network infrastructure monitoring with email alerts, graphical representation of the network topology, and RF coverage map analysis



## REDUNDANT SERVER

A back-up server increases system availability in case of server hardware issues

\*Available in all regions in Enterprise. Not available in North America in PLUS.



# SMARTPTT CUSTOM CONSOLE

Intelligent, customizable and user-friendly



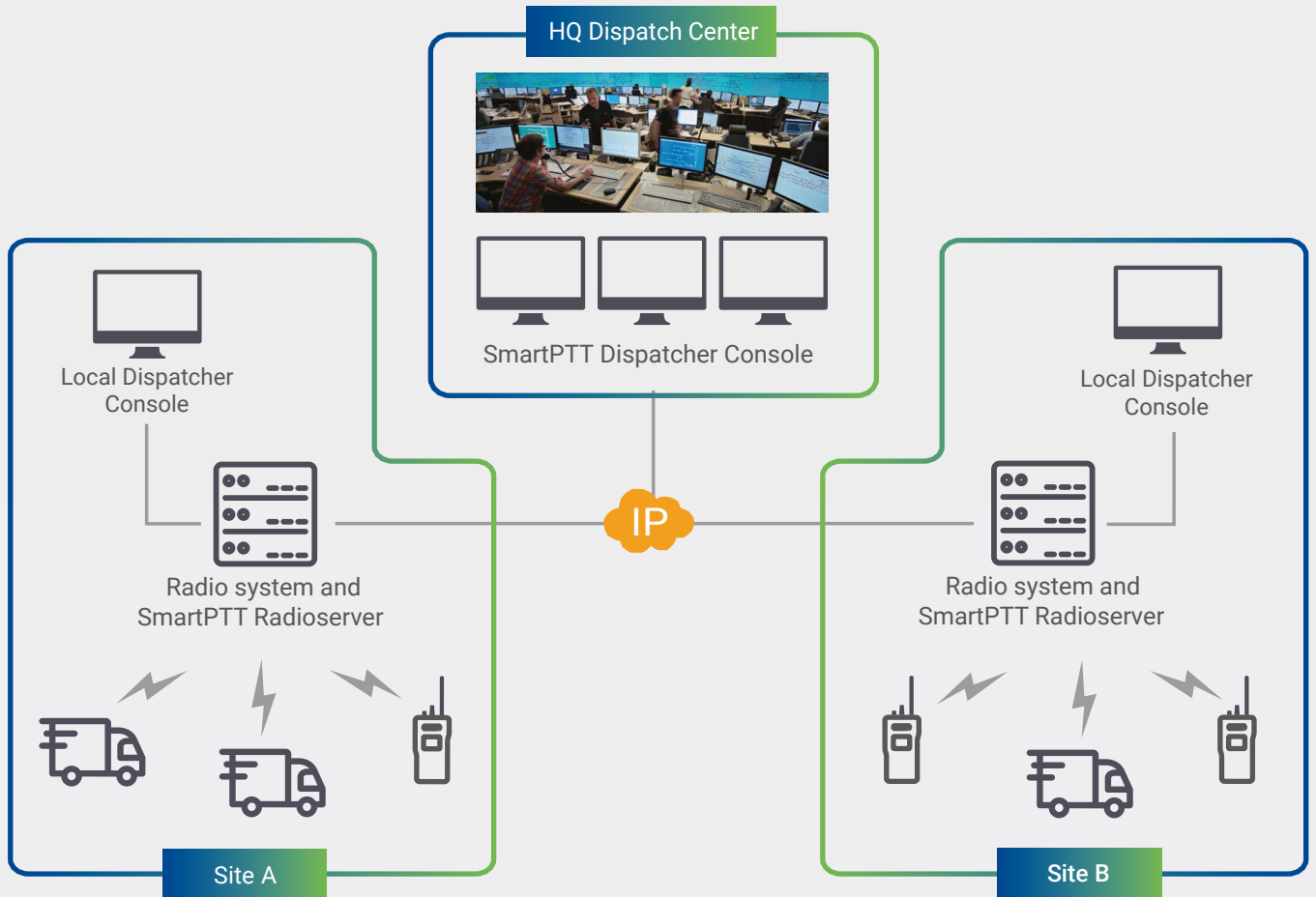
- .....  Quick All Call, Group Call, and Private Call initiation
- .....  Telemetry control for turning devices on/off or opening/closing a door
- .....  Tone and Voice Alerts: initiate pre-recorded tones or voice messages at the press of a button
- .....  Keypad to manually dial a subscriber by radio ID or select from an alphanumeric list
- .....  Create a control panel with quick access to the most frequently used features
- .....  Incoming events panel registers all incoming private calls and text messages to the dispatcher.
- .....  Set a background theme

## HOW DISPATCHERS BENEFIT USING SMARTPTT

- EASY MIGRATION FROM OLD DISPATCH CONSOLES
- SIMPLE AND FLEXIBLE USER INTERFACE, CUSTOMIZED TO EVERY DISPATCHER'S NEEDS
- FASTER DISPATCHER OPERATION AND REACTION TIME DURING EMERGENCIES

# MULTI-LEVEL DISPATCH

Dispatch positions can be installed locally, regionally, nationally, or worldwide, which is important and convenient for geographically distributed radio systems



# INTEROPERABLE COMMUNICATIONS

Bridging different types of networks ensures smooth migration from analog to digital and communication interoperability between schools, police, fire department, hospital and other agencies

## SMARTPTT RADIOSERVER





**SEAMLESS COMMUNICATIONS  
ANYTIME, ANYWHERE, AND WITH ANYONE**



Convenient device for each team member in any situation

# PERSONNEL SAFETY FEATURES



## INDOOR LOCATION

NIGHT GUARD SHIFT SECURITY



## GPS LOCATION

AMBULANCE IN ROUTE TO HOSPITAL



## LONE WORKER

MONITOR WORKERS IN HAZARDOUS ENVIRONMENTS



## GEOFENCING

ENTRY INTO PROHIBITED AREAS



## RULES AND ALERTS

WORKER SAFETY IN MINES



## MAN DOWN

WORKERS IN DISTRESS



## TELEMETRY

SPEED ALERTS



## REMOTE LISTENING

GAIN SITUATIONAL AWARENESS



## SOFTWARE

### SmartPTT Enterprise

SmartPTT version sold directly by Elcomplus for simplex systems using control stations or conventional and IP Site Connect systems using IP wireline connection to the repeaters

### SmartPTT PLUS

Motorola Sold & Supported version of SmartPTT offering full voice and data by an IP wireline connection to MOTOTRBO Conventional, IP Site Connect, Capacity Plus Single Site, Capacity Plus Multi-Site, and Capacity Max systems

---

## HARDWARE



**RG-2000** RoIP gateway to connect remote donor radios such as MOTOTRBO, P25, Tetra, and analog to the SmartPTT radioserver for interoperability

# TECHNICAL SERVICES



FASTER  
IMPLEMENTATION  
TIMES



SMARTPTT  
IS CUSTOMIZED TO THE  
CUSTOMER'S NEEDS

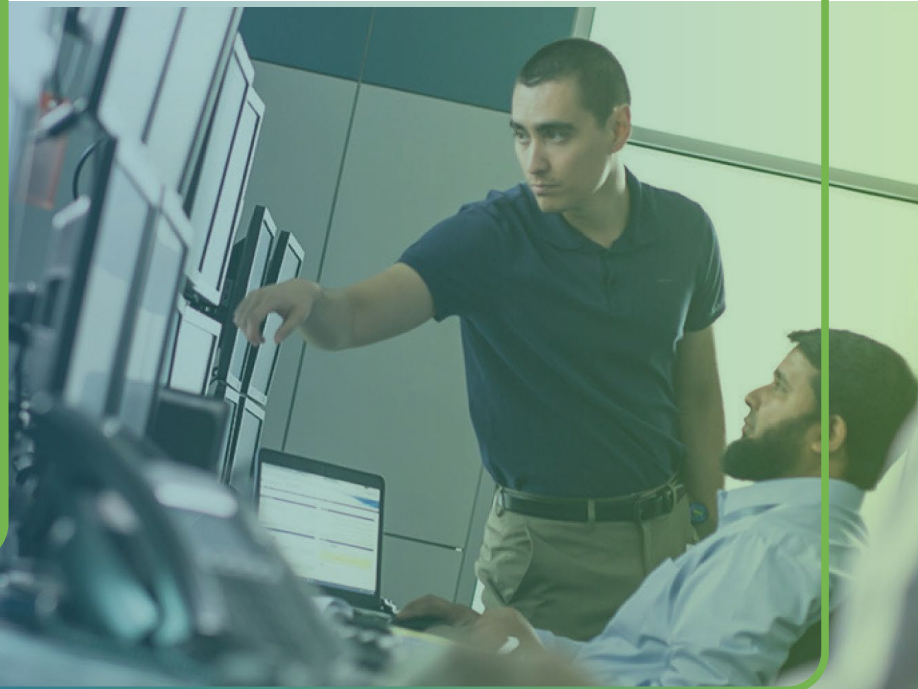


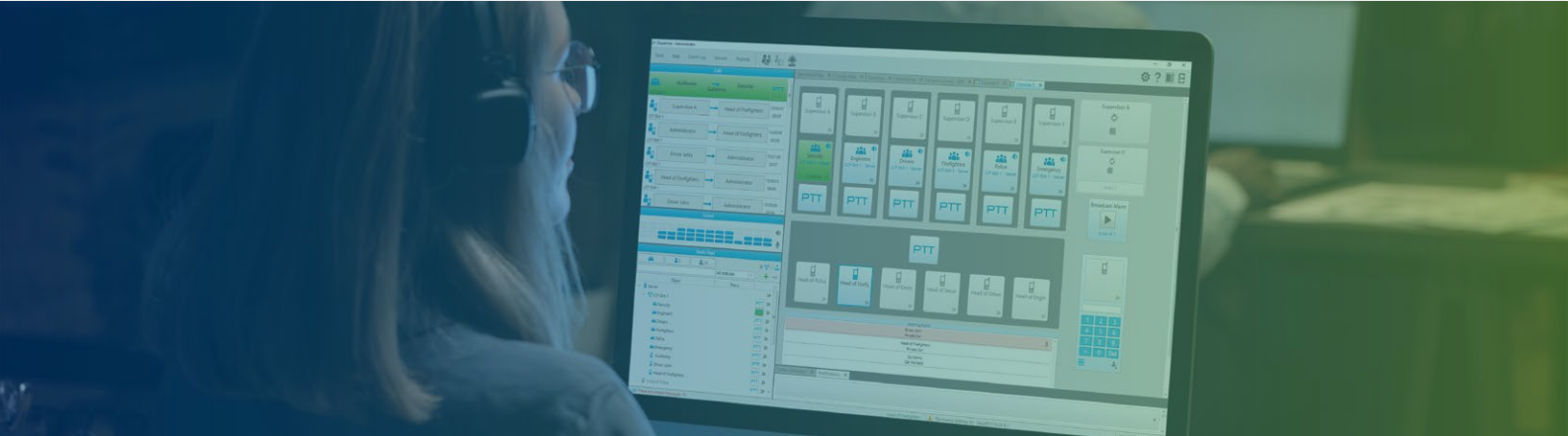
DISPATCHER TRAINING  
HELPS ENSURE CORRECT  
SYSTEM USAGE AND COMFORT  
WITH THE SYSTEM



GREATLY REDUCE  
IMPLEMENTATION ISSUES  
FOR GREATER CUSTOMER  
SATISFACTION

- Computer and accessory supply
- On-Site and Remote Implementation Services
- Technical and dispatcher trainings
- Software updates and technical support





2009

Year SmartPTT  
was 1st released

90

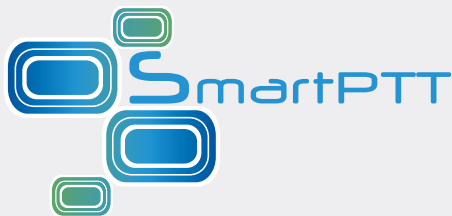
Customers  
in over 90  
countries  
worldwide

250

More than  
250 dealers  
around the world

2000

More than  
2000 customers



THE SMART CHOICE  
FOR YOUR FUTURE

Elcomplus, Inc.  
290 NW 165th St, Ste P-800A, 3rd Flr  
Miami, FL, 33169, USA  
sales@smartptt.com  
+1-786-362-5525



Motorola professional  
radio application partner

[www.smartptt.com](http://www.smartptt.com)



SOLD AND  
SUPPORTED