



Dispatch Communication Solution
FOR SCHOOLS

**SAFE AND SECURE
LEARNING ENVIRONMENTT**

DO YOU KNOW
WHERE YOUR BUSES
ARE AND WHERE
THEY'VE BEEN?

DO YOU HAVE
RADIO DISCIPLINE
PROBLEMS WITH
RADIO USERS?

DO YOU HAVE
INTEROPERABILITY
WITH PUBLIC SAFETY
AGENCIES?

SmartPTT is a voice dispatching software and data application designed to provide users with control over their MOTOTRBO radio system's voice and data capabilities thus ensuring safe and efficient teaching and learning experience.

SAFE SCHOOLS, PROTECTED CHILDREN

The safety of children and faculty in any school is always the highest priority. Using the emergency functions of the MOTOTRBO radio can alert that the accident has occurred. The dispatcher can easily identify who is in trouble and where they are located.

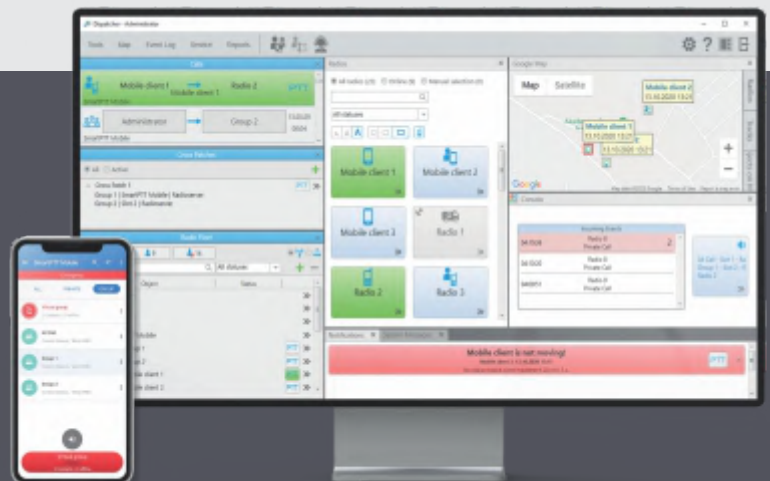
With SmartPTT, a dispatcher

can use the transmit interrupt feature to take control of a radio channel in the case of an emergency or a stuck mic condition.

The voice and event logs can be used to investigate the response to an emergency or to ensure that staff accomplished tasks in a timely manner.

Additionally, Rules & Alerts can be used to notify dispatch of staff inactivity or entry/exit from off-limits locations. Remote listening and video streaming from Avigilon IP cameras enable the SmartPTT dispatcher to gain situational awareness to respond more accurately to the emergency.

SmartPTT enables dispatchers to talk to different radios, talkgroups, smartphones, and radio systems. The custom console tool enables dispatchers to layout the user interface to clearly identify different talkgroups or radio systems and who is talking. Whether using a radio, a telephone, or a smartphone, SmartPTT will provide seamless communications.

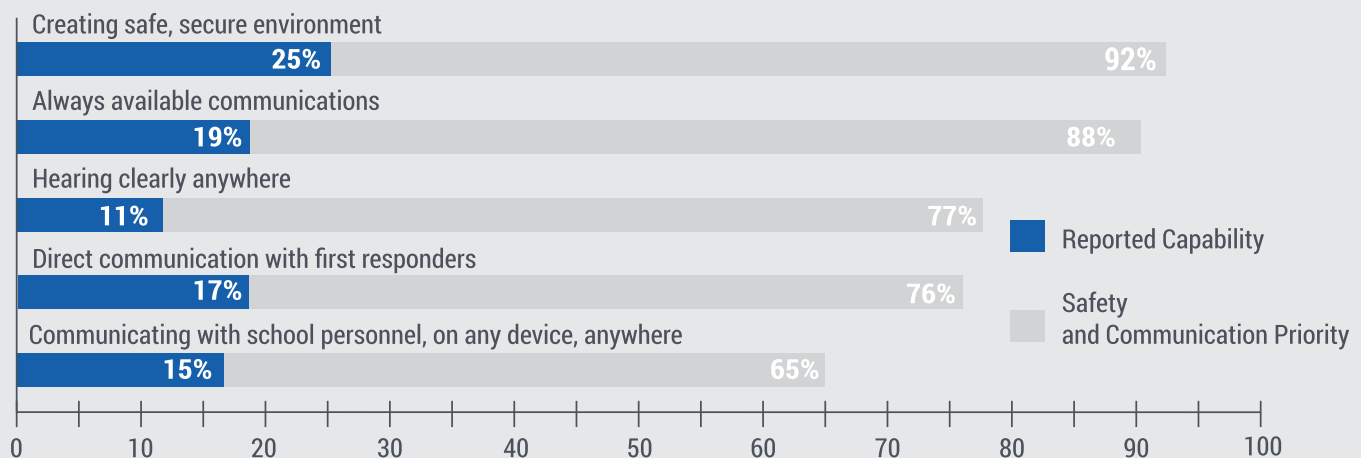


VITAL INTEROPERABILITY

When an incident occurs on the campus and law enforcement comes on-site, it is important for school security and administrators to have radio communications with Public Safety Agencies.

SmartPTT supports donor radios such as P25, so the dispatcher can 'patch' the school's MO-TOTRBO radio system to the law enforcement's P25 radio system. This helps provide seamless communications with law enforcement to prevent delays or communication failures

THE DISCONNECT: SCHOOL PRIORITIES VS SCHOOL CAPABILITIES



SOURCES:

1. The Role of Technology in Improving K-12 School Safety (2016) The Rand Corporation, the Police Executive Research Forum, RTI International, and the University of Denver
2. MSI 2017 US EDUCATION SURVEY



INTEROPERABILITY With Public Safety Agencies

When an incident occurs and law enforcement comes on-site, it is important for hospital security and administrators to have radio communications with them. SmartPTT supports donor radios such as P25, so the dispatcher can “patch” the hospital’s MOTOTRBO radio system to the law enforcement’s P25 radio system.

Patching with a public safety P25 radio (e.g. ambulance or firefighters) during an emergency is extremely helpful to assess a situation, coordinate the appropriate staff, and respond to an emergency.

If a hospital uses an analog radio system, SmartPTT provides a seamless transition to a digital system. Due to SmartPTT’s ability

to connect base stations in analog operating mode to the radioserver, analog and digital radios can work simultaneously in one system. Thus, hospitals can avoid large capital expenditures by replacing radio equipment over time as their budget allows.

SMARTPTT OPTIONAL CAPABILITIES



VOICE
RECORDING



GPS
LOCATION



INDOOR
LOCATION



RADIO NETWORK
BRIDGING



IP CAMERA
SUPPORT



WEB
CLIENT



NETWORK
MONITORING



DIRECT IP
CONNECTION



TELEPHONE
INTERCONNECT



EMPLOYEE SAFETY

through reduced emergency response times

If a hospital security officer has an emergency, the orange button, Man Down, or Lone Worker capabilities can be used to notify the dispatcher that the employee is in distress.

Supplementing this with indoor or outdoor location positioning, lets the dispatcher quickly identify the employee's location to reduce response times.

Remote listening and video streaming from Avigilon IP cameras enable the SmartPTT dispatcher to gain situational awareness to respond more accurately to the emergency.

PERSONNEL SAFETY FEATURES



INDOOR
LOCATION



GPS
LOCATION



LONE
WORKER



GEOFENCING



AVIGILON
SUPPORT



MAN DOWN



REMOTE
LISTENING

WORK EFFICIENCY

with optimal speed and quality of service provision

Voice dispatching and job ticketing can be used to make patient dispatch services faster and more efficient.

Job ticketing helps ensure maintenance tasks are completed and in a timely manner. This prevents tasks from “slipping through the cracks”.

SmartPTT’s event log and voice log provide employee accountability. The logs provide information like how long a job ticket took to complete, who said what and when, etc.



2009

Year SmartPTT was 1st released

90

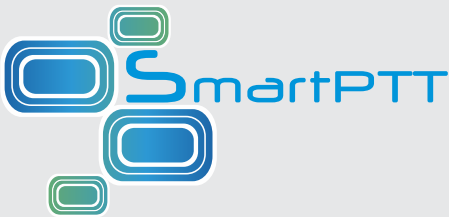
Customers in over 90 countries worldwide

250

More than 250 dealers around the world

2000

More than 2000 customers



THE SMART CHOICE FOR YOUR FUTURE

Elcomplus, Inc.
290 NW 165th St, Ste P-800A, 3rd Flr
Miami, FL, 33169, USA
sales@smartptt.com
+1-786-362-5525



Motorola professional radio application partner

www.smartptt.com



SOLD AND SUPPORTED